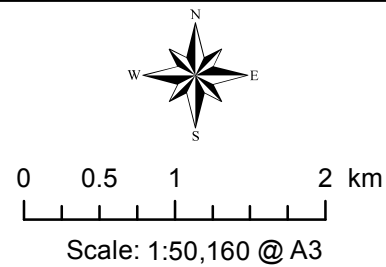
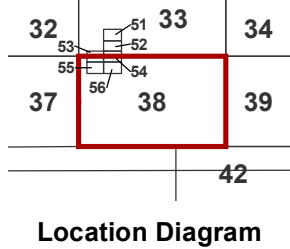
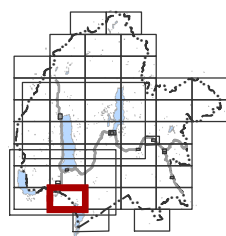


Waitaki District



Mackenzie District Council
- District Plan Maps -



Map Region:

Twizel River South

Map No:

38

Map Updated: 27/10/2016

Planning Map 38

Schedule of Designations (See Appendix A of the Plan)

Designation Number	Description
6	Twizel Substation
22	State Highway 8
42	Oxidation Ponds, Twizel

Schedule of Sites of Natural Significance (See Appendix I of the Plan)

Site Number	Name
11	Ohau River
45	Tekapo/Pukaki Rivers
46	Lake Benmore

Schedule of Geopreservation Sites (See Appendix I of the Plan)

Site Number	Name
G1	Ostler Fault - Ohau River faulted terraces

Schedule of Heritage Items (See Section 10 of the Plan)

Site Number	Name
H29	Ohau Bridge
H42	Susan Morrison Memorial

PLEASE NOTE:

The Sites of Natural Significance, Scenic Viewing Areas and Lakeside Protection Areas shown on these Planning Maps have been taken from topographical maps (1:50000) prepared as part of Council's decisions on submissions to the Proposed District Plan. The topographical maps are available for inspection at the Mackenzie District Council offices, Main Street, Fairlie.