

Though I have put a number of submissions in, the one of upper most concern, is the deletion of the Teintosh lower node. I further add to my submission, regards re-instating same.

A brief background. Lake Pukaki has been raised twice, the first in the early 1950's when the Seymour family lost 3,000 acres^{plots} with no compensation, then again in the mid 1970's when the remaining 1,000 acres along with the entire establishment "deceased". It has often been quoted that Teintosh has been the biggest loser of any, to hydro generation in New Zealand. Part of the 1970's deal was that the property was set up as two separate operations (now known as nodes)

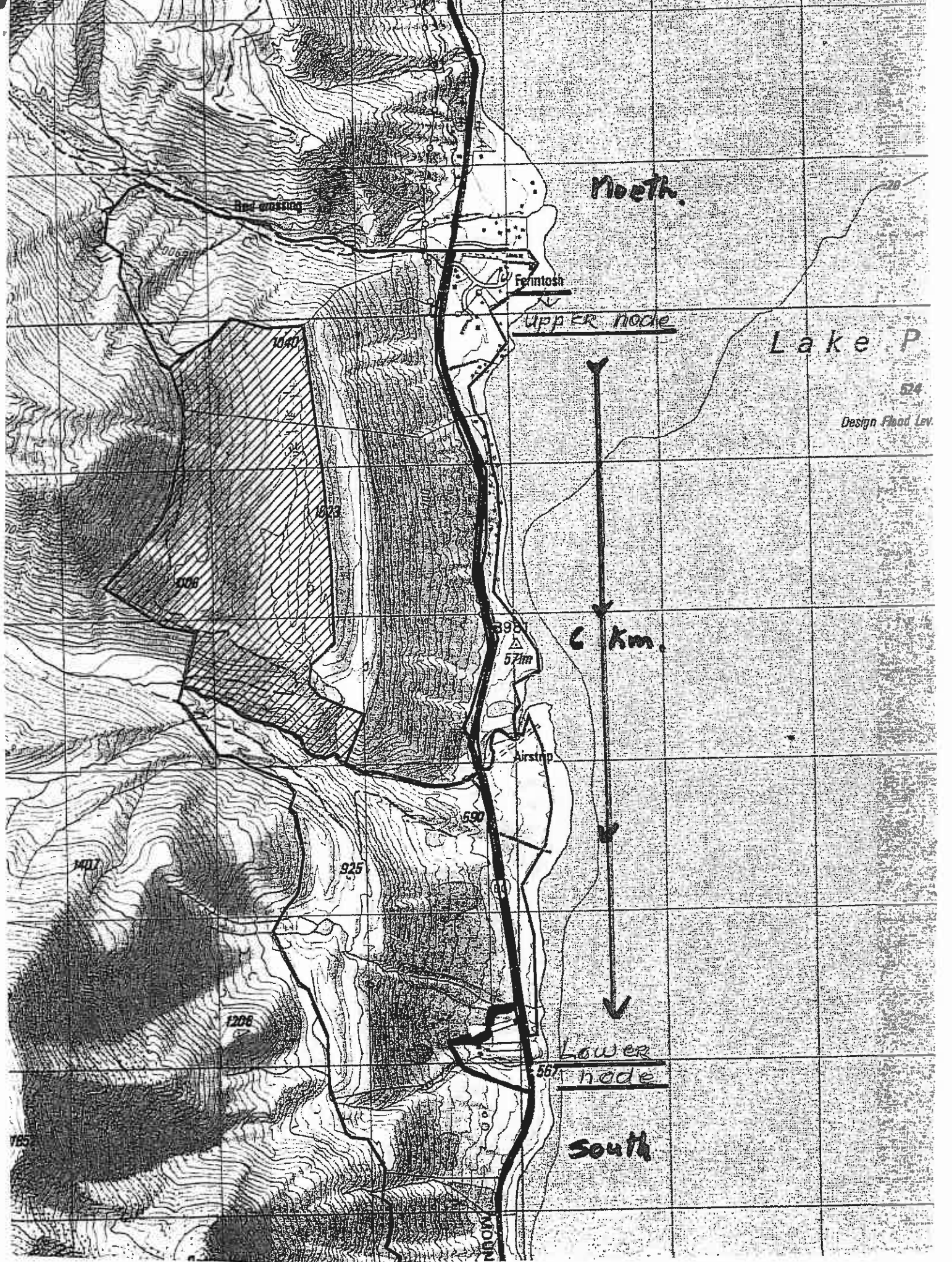
The upper one, set up in the North corner against the lake, as tourist accommodation i.e. bed and breakfast, cottage and backpackers. Half the homestead was replacement, the other half at station cost. One line on this node needs attention later, as it cuts off one building, and goes through another.

The lower node, the operational part of the property, has been deleted from plans. It was always able to be shown to us by former staff, and we did not realise that anything was amiss until the change Plan 13 came out. The accompanying map is as we remember it. Though it looks a large area, you can see by the contour lines that it is quite steep, broken by guts and creeks, with large areas of swamps and seepage, not allowing many sites for an allowed^{the} house, implement and hay sheds, and other general requirements. To the South it follows the existing fence line, West and North to the woodshed and cookshop, where it veers North East to take in a few low knobs and part of a creek. The Western side stays higher on the fence line to include the power generation, domestic and stock water supplies. At present we are using the diesel generator, but costs will drive us to operate off both. The shearing shed, sheep and cattle yards are there. The four Twizel single men's huts are at the end of their lives.

Because there has been mainly only Gilbert and myself running the property, and doing so from the Homestead end, there has been no need to further develop at this area, but at our ages now, some serious thinking is to be done regarding the future. These nodes are 6kms apart.

ps
Marion Seymour - Teintosh Str.

Densem report - map 8 - pink area cuts off above lower node.



North

Red crossing

Ferintosh

Upper node

Lake P

524

Design Flood Lev.

6 Km.

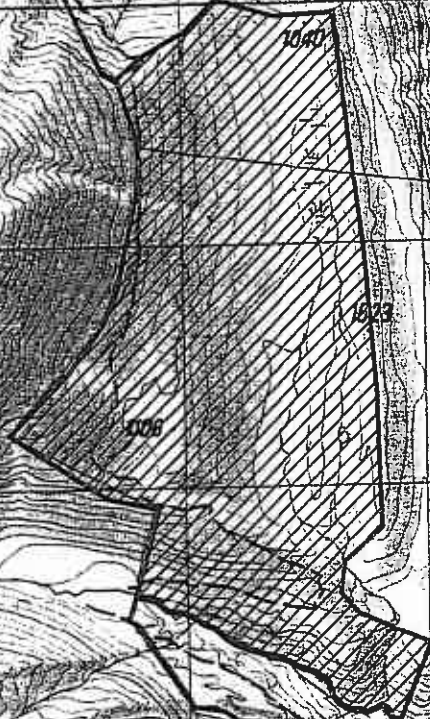
395
57m

Airstrip

Lower node

567

South



1040

1023

1008

1407

925

590

1206

785

MOON

