

Representation Review

2015 Review Prior to the 2016 Local Body Elections

Submissions have now closed

On July 23, 2015, the Mackenzie District Council reviewed its representation arrangements and resolved that the following proposal apply for the council and its community boards for the elections to be held on October 8, 2016:

Council Representation

It is proposed that the council comprise six members elected from two wards, and the Mayor. The two wards reflect the following identified communities of interest:

Ward	Communities of interest
Opuha Ward	The area of more intense pastoral farming encompassing the Fairlie Basin below the top of Burkes Pass, including the rural areas of Albury, Cave, Allandale, Ashwick Flat, the village of Burkes Pass and the township of Fairlie.
Pukaki Ward	The area of High Country land west of the Two Thumb and Dalgety Ranges, farming the Mackenzie Basin and including the township of Twizel and Tekapo, associated rural areas and the Mount Cook Village.

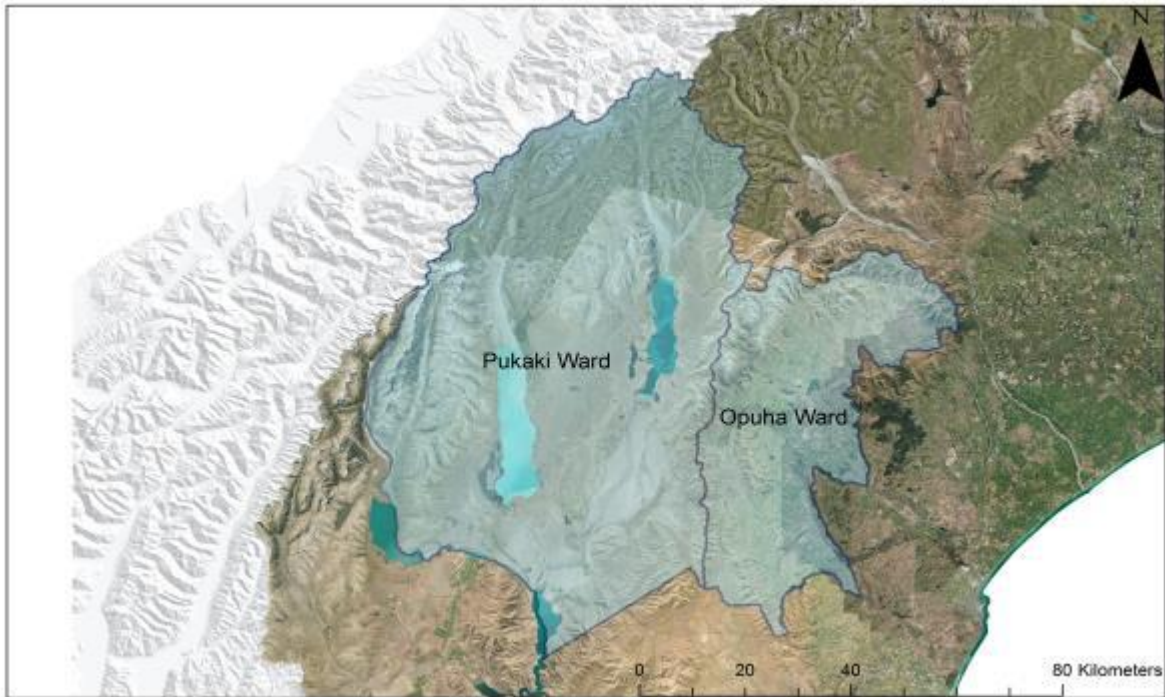
This retains the status quo.

The population that each member will represent is as follows:

Ward	Population (2013 Census)	Members	Population per member
Opuha	2,127	3	709
Pukaki	2,031	3	677
TOTAL	4,158	6	693

In accordance with section 19V(2) of the *Local Electoral Act 2001* the population that each member represents must be within the range of 693 +/- 10% (624 to 762), unless particular community of interest considerations justify otherwise. Both wards comply with the statutory test.

Mackenzie District Council Wards

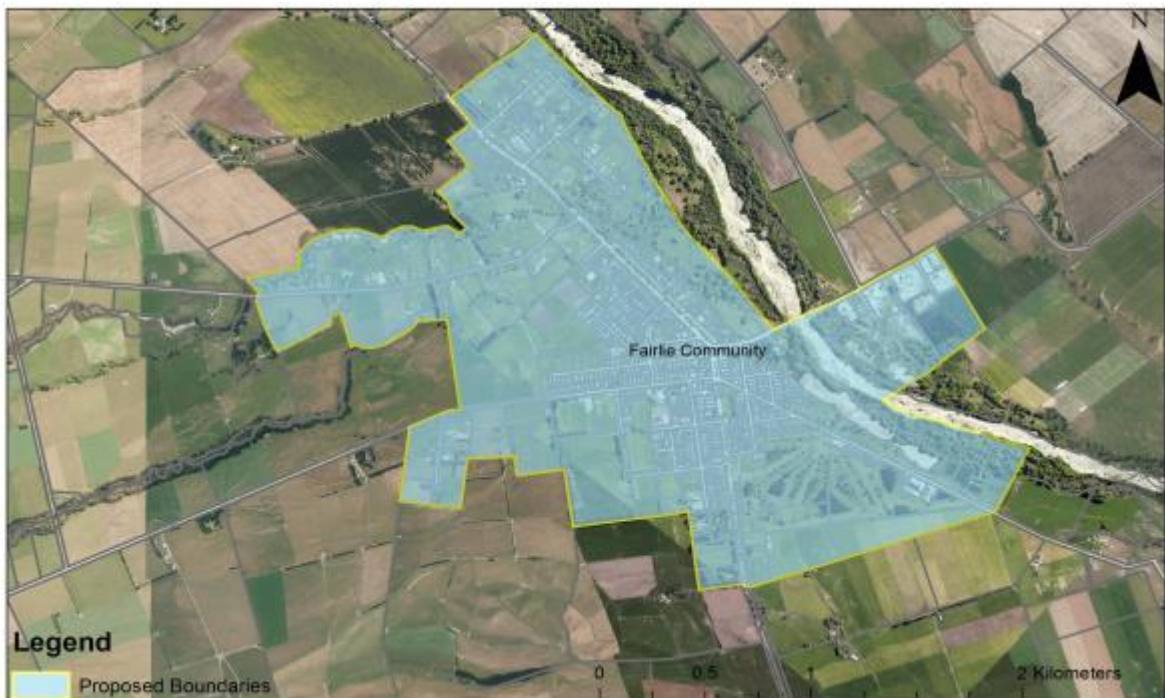


Community Board Representation

It is proposed that the following three community boards be elected:

Fairlie Community Board

Community Board Boundaries Fairlie



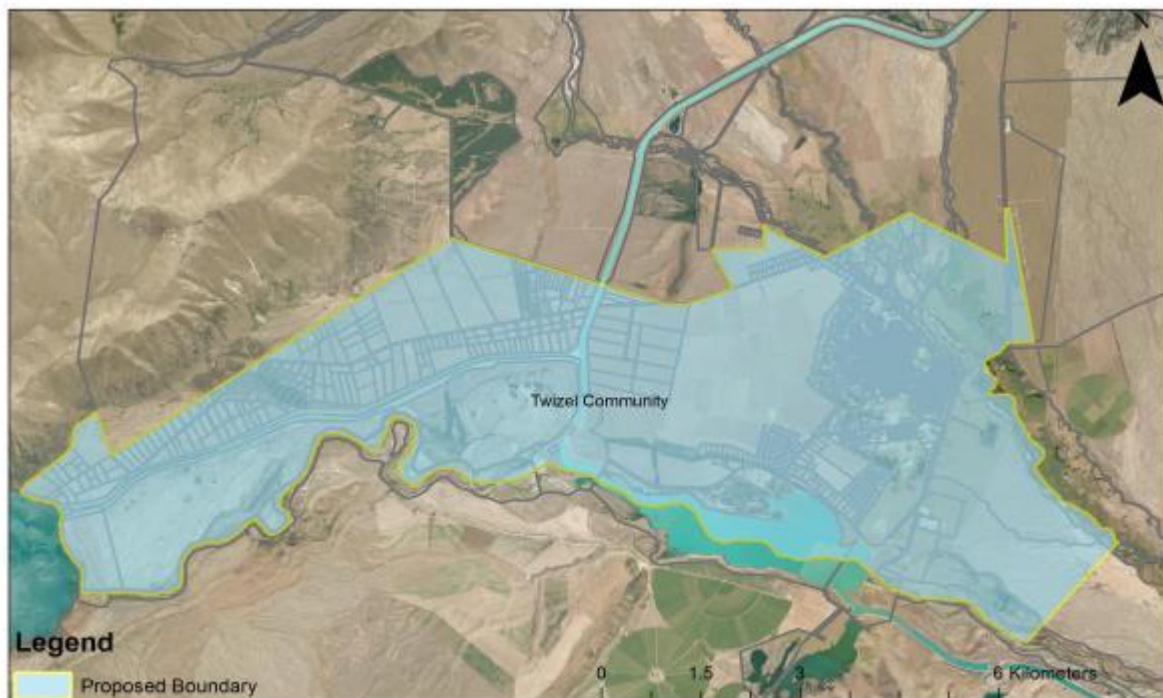
Tekapo Community Board

Community Board Boundaries Tekapo



Twizel Community Board

Community Board Boundaries Twizel



The changes to the previous community board areas are summarised below:

Fairlie - The Fairlie Community Board boundary has had minor amendments to better reflect the urban boundary of Fairlie. Amendments are proposed to include all of a subject property within the boundary, whereas the previous boundary had included only half of that property; and to exclude two other areas of land, one being an area along the Opihi riverbed and the other a small area of farmland to the west, which is part of a larger rural property.

Tekapo - The boundary of the Tekapo Community Board is proposed to be changed to exclude the area of council-owned forestry and the land containing the sewerage ponds to the south of the town. This is proposed because there is no current or likely future residential activity in those areas.

Twizel - the boundary for the Twizel Community Board is unchanged.

The community boards are proposed to comprise the following membership:

Community Board	Elected members	Appointed members
Fairlie	Four members elected by the Fairlie community as a whole	One member appointed by the Council
Tekapo	Four members elected by the Tekapo community as a whole	One member appointed by the Council
Twizel	Four members elected by the Twizel community as a whole	One member appointed by the Council

This is the status quo and no changes to current community board structures are proposed.

Further Information

Copies of the council's resolution and maps setting out the areas of the proposed wards and community boards may be obtained from council offices in Main Street, Fairlie or Market Place, Twizel.

Submissions have now closed