

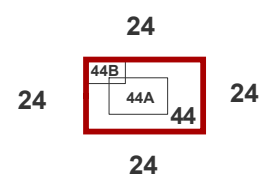
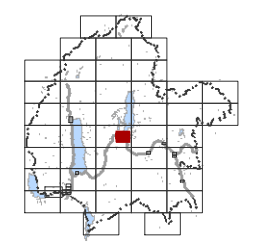
**Refer to Map 44B - Tekapo Detail 2 -
for more info**

The zone information on this Planning Map has been amended by Plan Change 21 (PC21) which was publicly notified on 23 September 2022. The zones affected are the Residential 1, 2, 3 and 4 Zones, the Village Centre Zone - including the Lake Tekapo Village Centre 1 and Lake Tekapo Village Centre 2 Zones, the Service Zone, the Industrial Zone, the Tourist Zone, and Travellers Accommodation Zone. All other zones and Planning Notations are to remain operative unless expressly stated in PC21. Updated Planning Maps incorporating the new Residential, Commercial and Mixed Use and Industrial Zones in PC21 can be found at: <https://www.mackenzie.govt.nz/council/strategies-plans-and-reports/district-plan-changes-and-consultation>

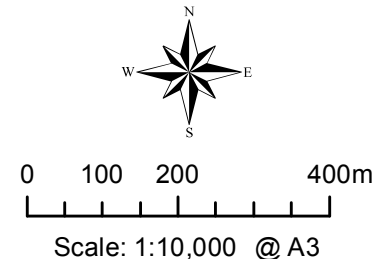
**Refer to Map 44A - Tekapo Detail -
for No Build, Landscape Setbacks & Height Restriction Areas**



Mackenzie District Council
- District Plan Maps -



Location Diagram



Map Region:	Map No:
Lake Tekapo Town	44
	Map Updated: 19/10/2017