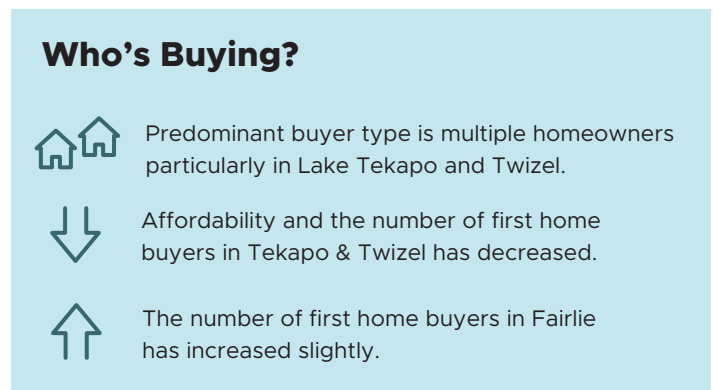
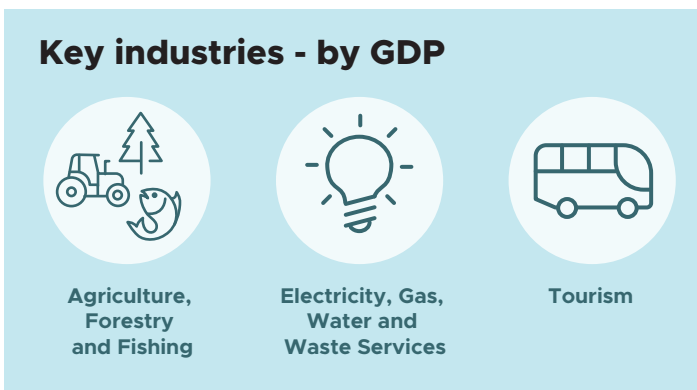
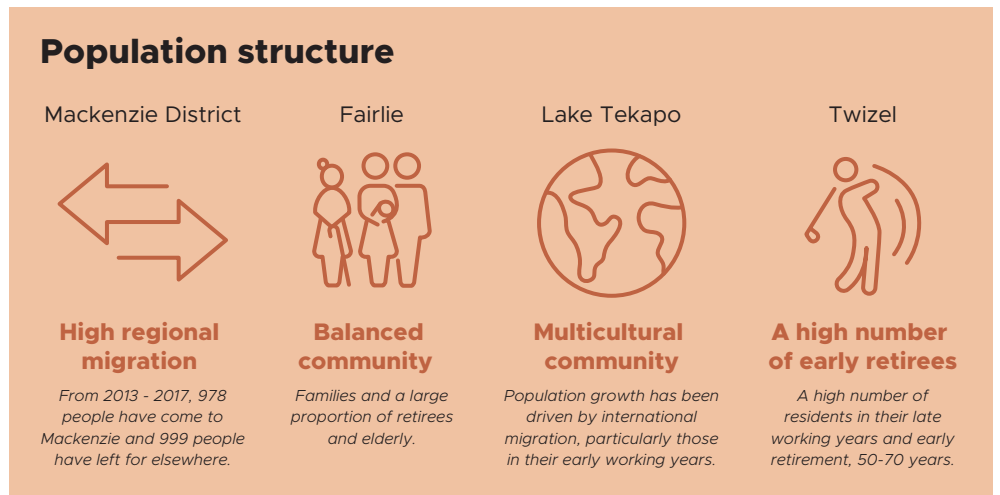
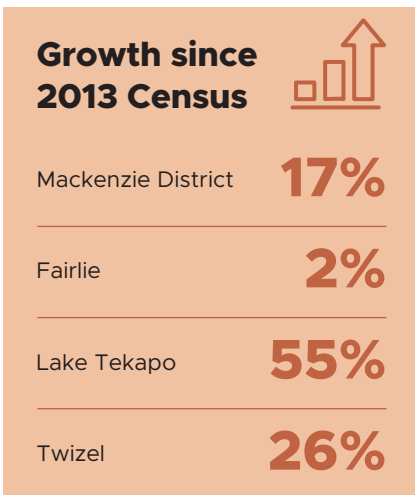
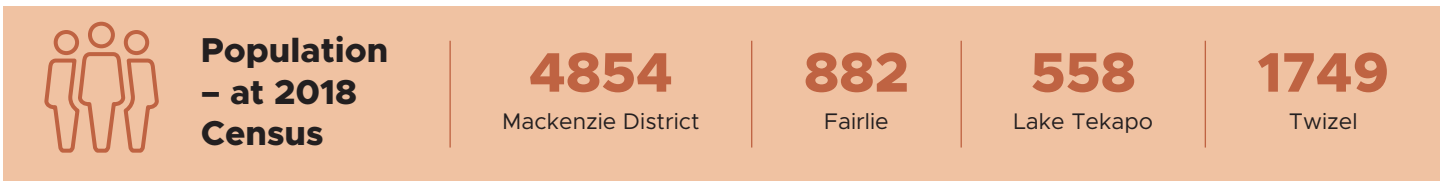


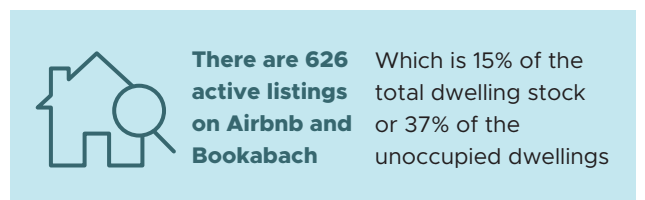
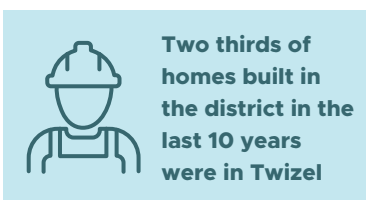


Mackenzie District Housing Stocktake

At a glance



| Housing | Number of dwellings | Houses built per year | Percentage unoccupied* | Percentage rented | Average price | Average price growth <i>Since 2015</i> |
|--------------------|---------------------|-----------------------|------------------------|-------------------|---------------|---|
| Mackenzie District | 3655 | 67 | 37% | 11% | \$499,224 | 82% |
| Fairlie | 480 | 1 | 21% | 11% | \$367,404 | 28% |
| Lake Tekapo | 480 | 14 | 52% | 24% | \$906,912 | 141% |
| Twizel | 1449 | 34 | 53% | 16% | \$395,081 | 60% |



*NZ has 10% unoccupied homes