

The Mackenzie District Council

Speed Limit Review Bylaw 2013

1. Introduction

Pursuant to Section 156 Local Government Act 2002 and Land Transport Rule: Setting of Speed Limits 2003 the Mackenzie District Council makes this bylaw to set speed limits as specified in the Schedules.

2. Title

The title of this bylaw is the Mackenzie District Council Speed Limit Bylaw 2013

3. Date the speed limits come into force

The speed limits described in the schedules shall come into force on the 1st of July 2013

4. Interpretation:

Road means the same as in Land Transport Rule: Setting of Speed Limits 2003

Speed limit means the same as in Land Transport Rule: Setting of Speed Limits 2003

Urban Traffic Area means the same as in Land Transport Rule: Setting of Speed Limits 2003

5. Speed Limits

The roads or areas described in the schedules specified in paragraph 6 or as indicated on the maps referenced in the schedules are declared to be subject to the speed limit specified in the schedules, which are part of this bylaw.

6. Schedules

Schedule 1: Roads subject to a speed limit of 20 km/h

Schedule 2: Roads subject to a speed limit of 30 km/h

Schedule 3: Roads subject to a speed limit of 40 km/h

Schedule 4: Urban Traffic Areas roads subject to a speed limit of 50 km/h

Schedule 5: Roads subject to a speed limit of 60 km/h

Schedule 6: Roads subject to a speed limit of 70 km/h

Schedule 7: Roads subject to a speed limit of 80 km/h

Schedule 8: Rural areas - roads subject to a speed limit of 100 km/h

7. Date Bylaw made

This Bylaw has been made in accordance with the Special Consultative Procedure of the Local Government Act 2002 initiated by Council on 14th May 2013 and confirmed by it on 25th June 2013

The Common Seal of the Mackenzie District Council was affixed to a copy of this Bylaw on 25th June 2013

Signed _____

Claire Barlow (Mayor)

Signed _____

Wayne Barnett (Chief Executive Officer)

SCHEDULES OF SPEED LIMITS

Schedule 1: Roads subject to a speed limit of 20 km/hr

Twizel

Kate Cameron Drive
Lake Front Rd
Freda du Faur Avenue

Schedule 2: Roads subject to a speed limit of 30 km/hr

Twizel

Market Place
Mt Cook Street from Market Place to Tasman Rd
Tasman Rd from Mt Cook Street to Mackenzie Drive
Two Thumb Drive

Tekapo

Commercial Road/Lake Front Area

Schedule 3: Roads subject to a speed limit of 40 km/hr

There are no roads in this schedule.

Schedule 4: Urban Traffic Areas - roads subject to a speed limit of 50 km/hr

Fairlie, including Eversley Reserve

All local roads within the Urban Traffic Area that is shown on the Speed Limit Map for Fairlie unless identified in the legend as having a speed limit other than 50km/hr.

Lake Tekapo

All local roads within the Urban Traffic Area that is shown on the Speed Limit Map for Lake Tekapo unless identified in the legend as having a speed limit other than 50km/hr.

Twizel

All local roads within the Urban Traffic Area that is shown on the Speed Limit Map, including Pukaki Airport, for Twizel unless identified in the legend as having a speed limit other than 50km/hr.

Schedule 5: Roads subject to a speed limit of 60 km/hr

Albury

All local roads on the Speed Limit Map for Albury and identified in the legend as having a 60km/hr speed limit.

Kimbell

All local roads on the Speed Limit Map for Kimbell and identified in the legend as having a 60km/hr speed limit.

Schedule 6: Roads subject to a speed limit of 70 km/hr

Ostler Road as shown on Twizel Speed Limit Map

Ohau Road as shown on Twizel Speed Limit Map

Manuka Terrace as shown on Twizel Speed Limit Map

Schedule 7: Roads subject to a speed limit of 80 km/hr

Fairlie, including Eversley Reserve

All local roads on the Speed Limit Map for Fairlie and identified in the legend as having a 80km/hr speed limit, being:

Nixons Road, from State Highway 8 to Hall Stream Bridge.

School Road, from the Urban Traffic Area boundary to Struthers Street.

Struthers Street.

Twizel

All local roads on the Speed Limit Map for Twizel and identified in the legend as having a 80km/hr speed limit, being:

Glen Lyon Road, from State Highway 8 to Old Glen Lyon Road

Max Smith Drive, from State Highway 8 to the Ruataniwha Holiday Park entranceway.

Tekapo

The first 2000m of Lilybank Road up to the first Cattlestop.

Schedule 8: Rural areas - roads subject to a speed limit of 100 km/hr

All local rural roads not included in other Schedules.

COMMENTARY TO SCHEDULES OF SPEED LIMITS CHANGED SINCE 2009 REVIEW

Albury

Previous Speed Limit Notice Mackenzie District Council Speed Limit Bylaw 2009

Comment Speed Limits on existing streets are unchanged

Fairlie

Previous Speed Limit Notice Mackenzie District Council Speed Limit Bylaw 2009

Comment Speed Limits on existing streets are unchanged

Kimbell

Previous Speed Limit Notice Mackenzie District Council Speed Limit Bylaw 2009

Comment Speed Limits on existing streets are unchanged

Lake Tekapo

Previous Speed Limit Notice Mackenzie District Council Speed Limit Bylaw 2009

Comment Commercial Road/Lake Front Area reduced speed limit of 30km/hr to allow for further developments in area and a broader mix of traffic use.
Lilybank Road – First 2km from SH8 – First Cattlestop, reduced speed limit of 80km/hr due to Regional Park developments.

Twizel

Previous Speed Limit Notice

Mackenzie District Council Speed Limit Bylaw 2009

Comment

Ohau Road, Ostler Road will have increased new speed limits of 70km/hr. This is due to low side friction available in the area and new Cycle/pedestrian tracks that have been installed. The first 2.5km of Manuka Terrace will have a reduced speed limit of 70km/hr, this is to enable a safe speed on the soon to be constructed section of seal extension.

Due to increased pedestrian traffic around the Rowing Complex, Freda du Faur has been reduced a 20km/hr speed limit.

The Pukaki Airport will have a designated speed limit of 50km/hr

Mt Cook Village

Previous Speed Limit Notice

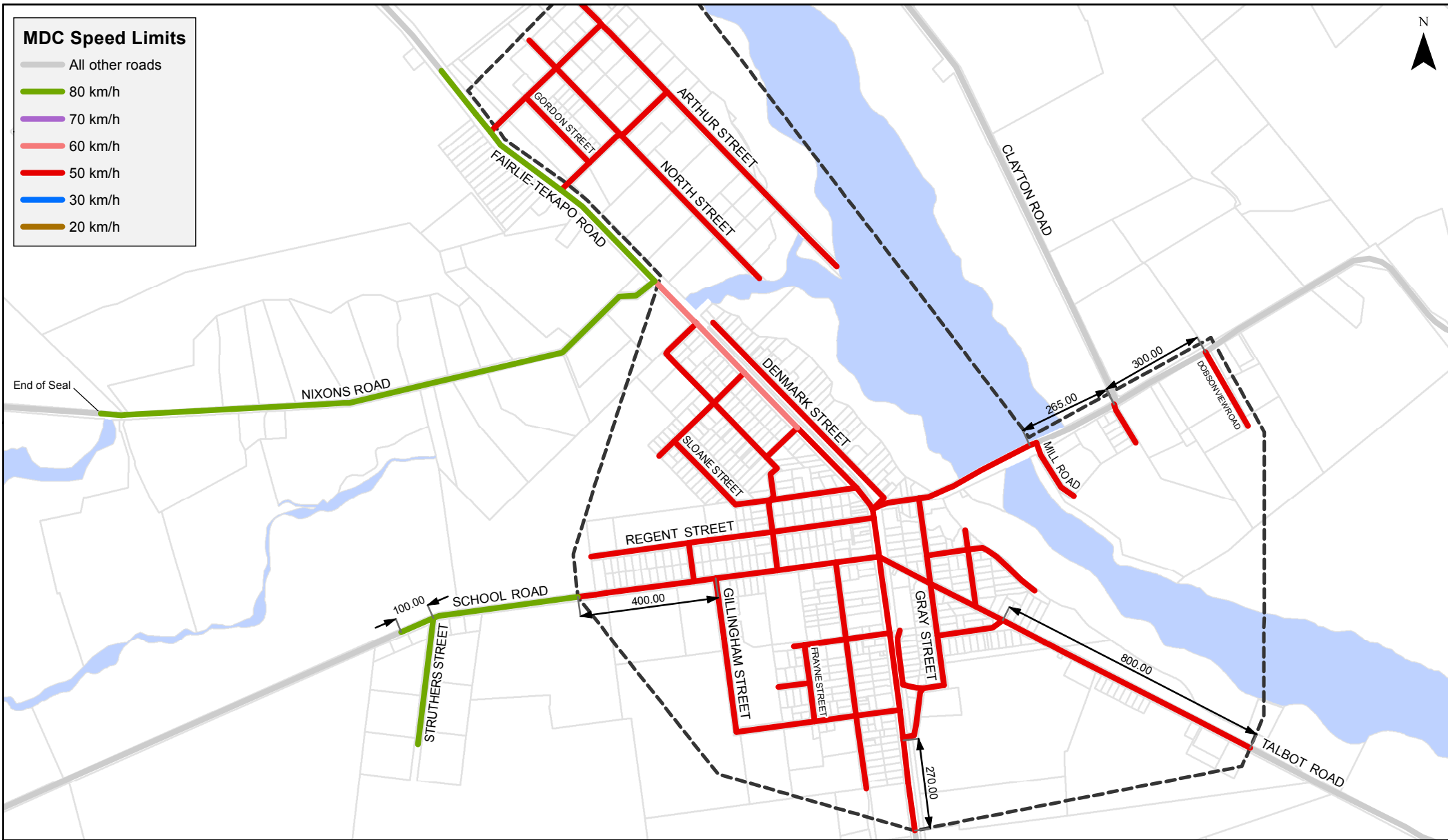
Mackenzie District No.2 1991

Gazette Reference

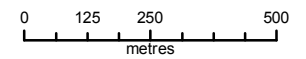
19/12/1991, No. 193, p. 3949

Comment

Speed Limits on existing streets are unchanged



Fairlie Speed Limits



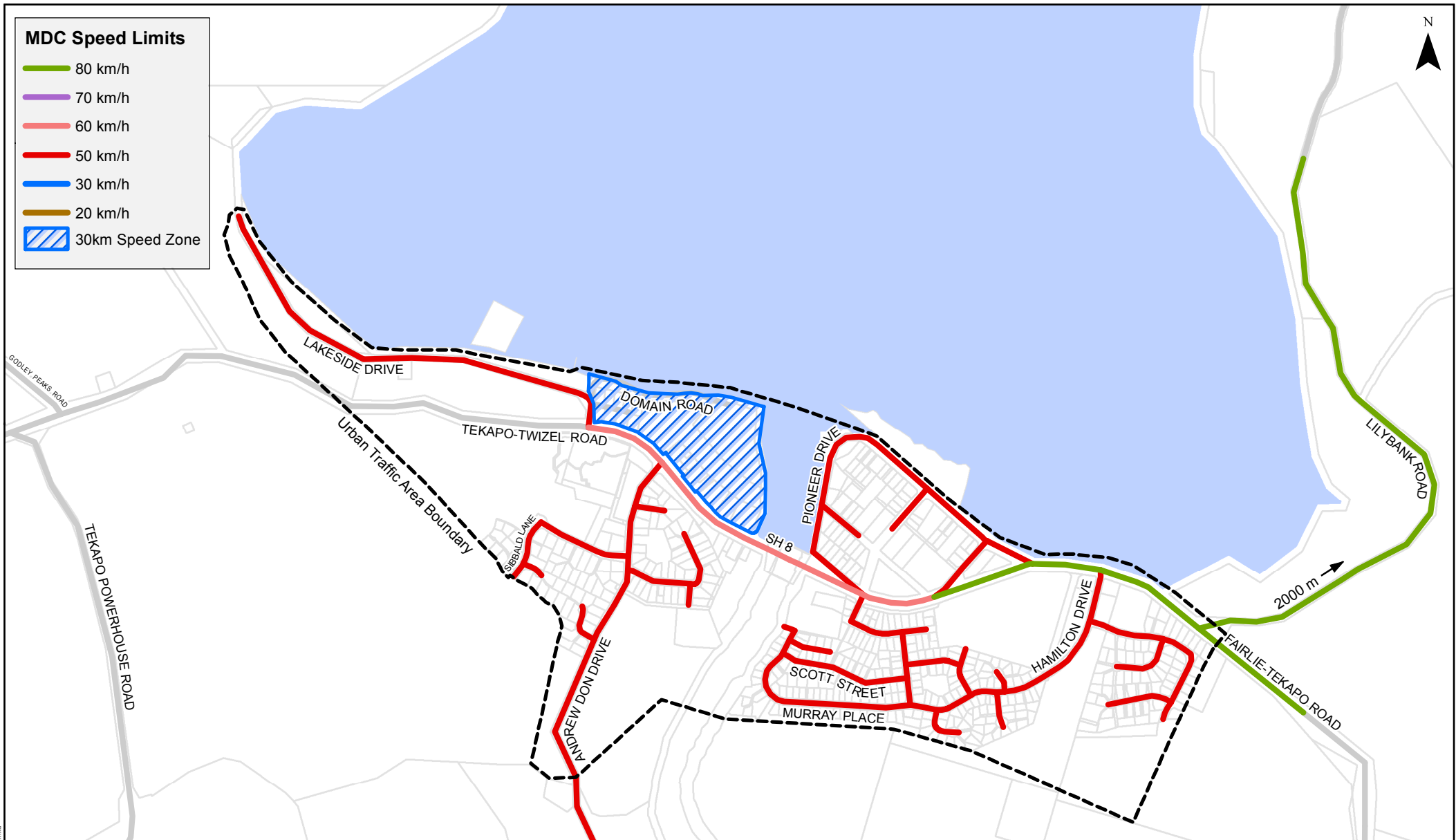
Scale 1:15,000

Property boundaries, 20m Contours, road names, rail line, address & title points sourced from Land Information NZ. Crown Copyright reserved. Property boundaries accuracy: +/-1m in urban areas, +/-30m in rural areas. Census data sourced from Statistics NZ. Postcodes sourced from NZ Post. Assets, contours, water and drainage information shown is approximate and must not be used for detailed engineering design. Other data has been compiled from a variety of sources and its accuracy may vary, but is generally +/- 1m.

MAP PRODUCED BY:
MacKenzie District Council
PO Box 52, Main Street
FAIRLIE, NZ

ORIGINAL MAP SIZE: A4
DATE: 1/16/2013
AUTHOR: Jana





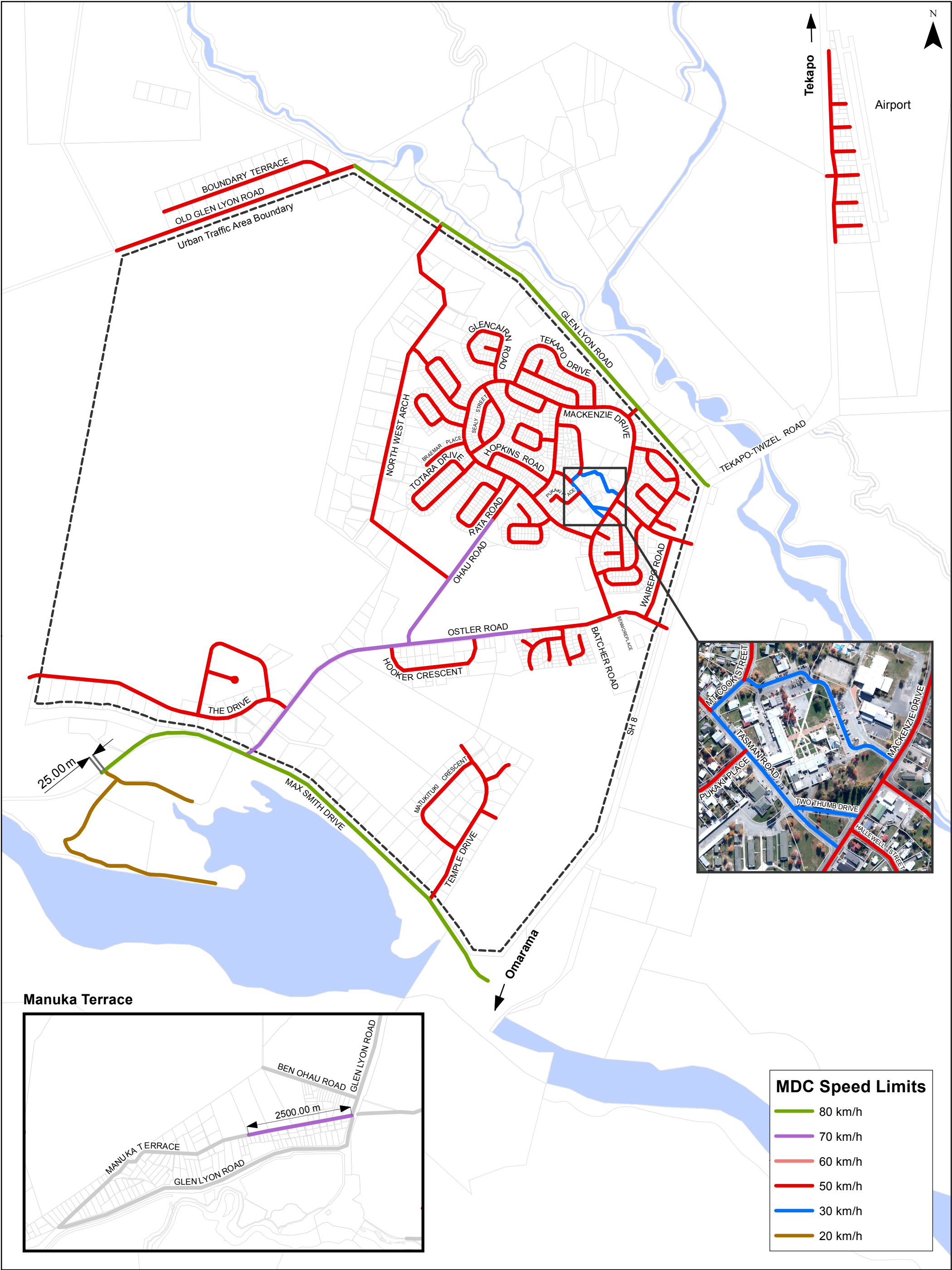
Tekapo Speed Limits

Property boundaries, 20m Contours, road names, rail line, address & title points sourced from Land Information NZ. Crown Copyright reserved. Property boundaries accuracy: +/-1m in urban areas, +/-30m in rural areas. Census data sourced from Statistics NZ. Postcodes sourced from NZ Post. Assets, contours, water and drainage information shown is approximate and must not be used for detailed engineering design. Other data has been compiled from a variety of sources and its accuracy may vary, but is generally +/- 1m.

MAP PRODUCED BY:
MacKenzie District Council
PO Box 52, Main Street
FAIRLIE, NZ

ORIGINAL MAP SIZE: A4
DATE: 5/14/2013
AUTHOR: jana





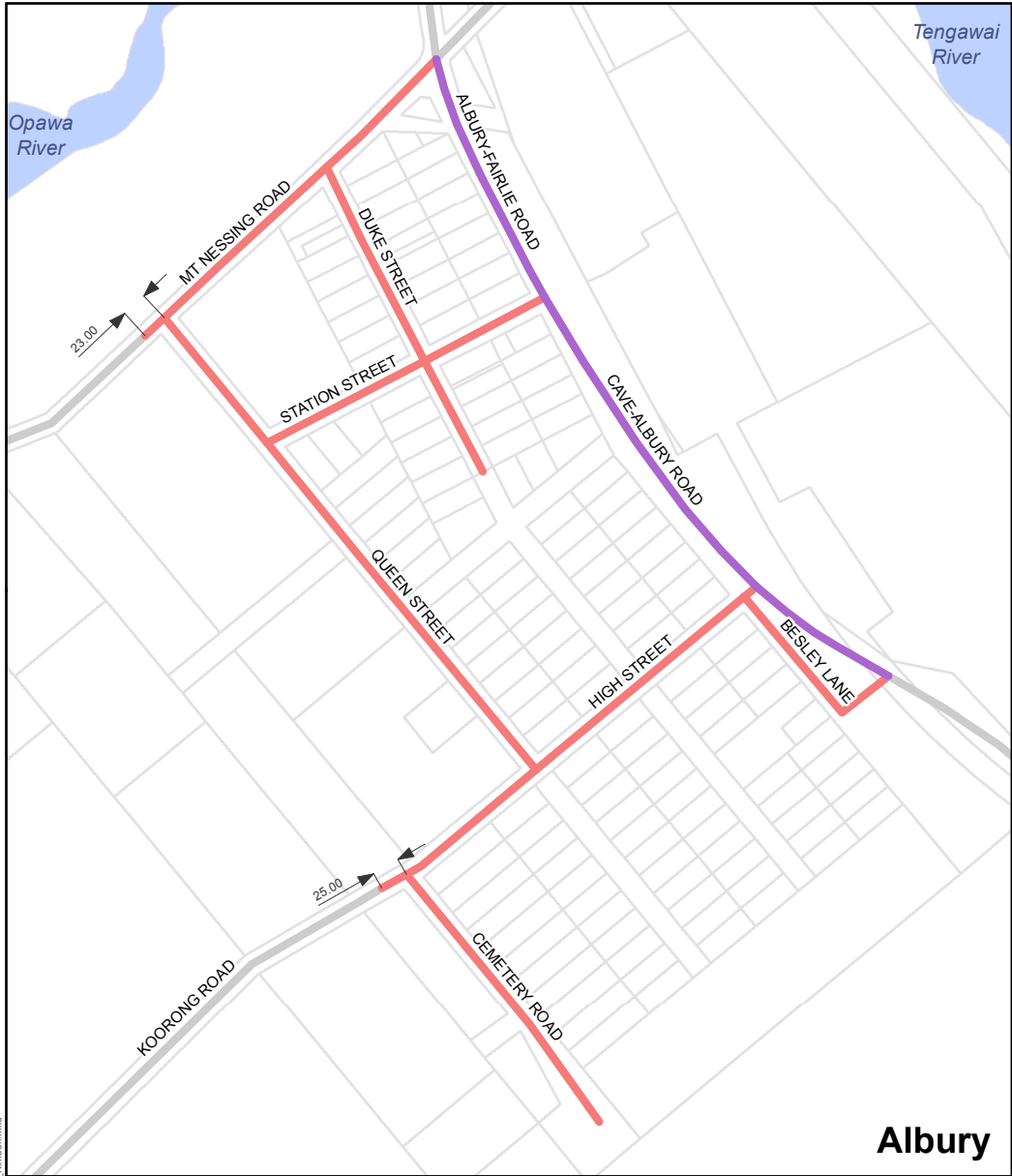
Twizel Township Speed Limits

Property boundaries, 20m Contours, road names, rail line, address & title points sourced from Land Information NZ. Crown Copyright reserved. Property boundaries accuracy: +/-1m in urban areas, +/-30m in rural areas. Census data sourced from Statistics NZ. Postcodes sourced from NZ Post. Assets, contours, water and drainage information shown is approximate and must not be used for detailed engineering design. Other data has been compiled from a variety of sources and its accuracy may vary, but is generally +/- 1m.

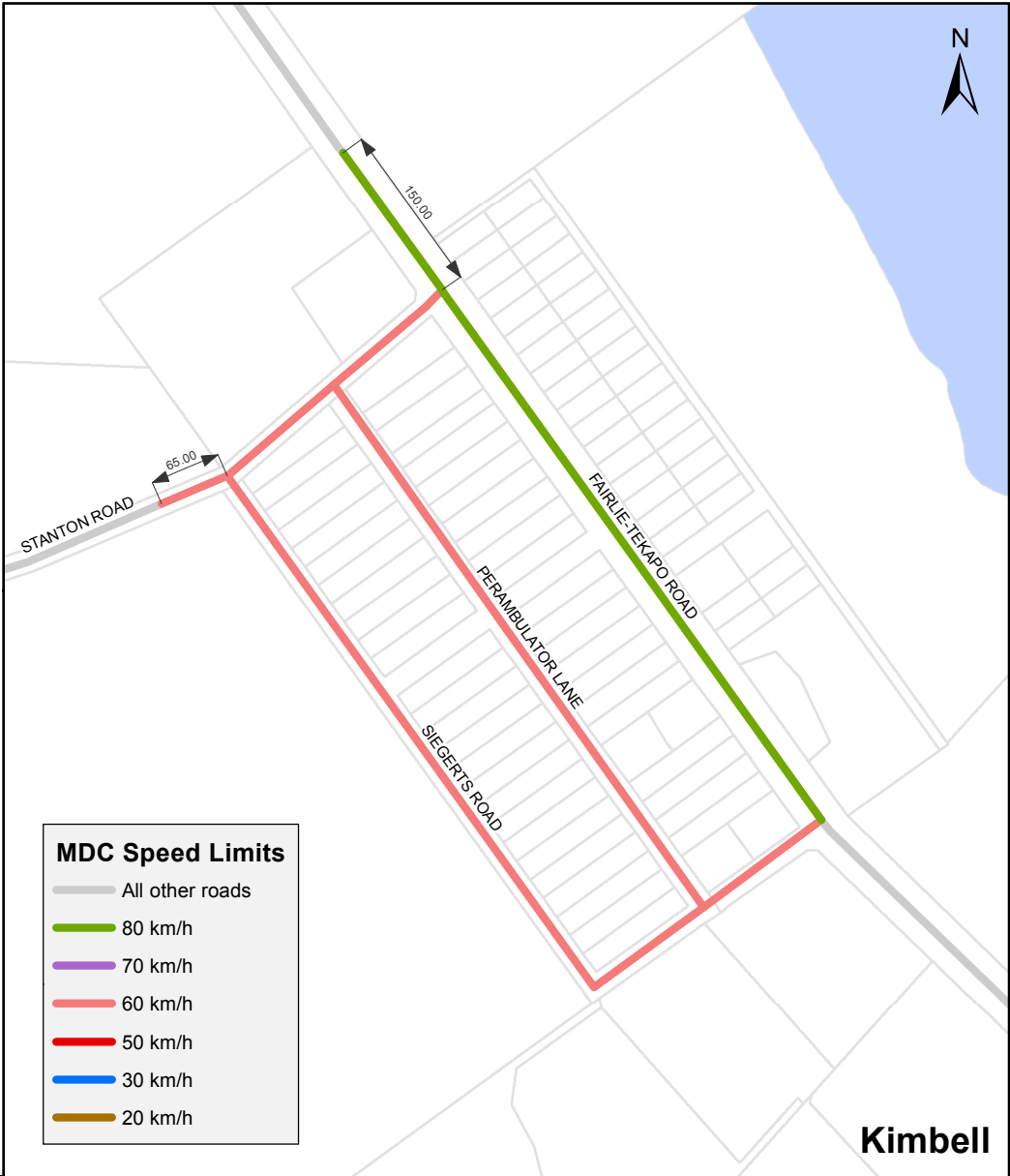
MAP PRODUCED BY:
MacKenzie District Council
Main Street
FAIRLIE, NZ

ORIGINAL MAP SIZE: A3
DATE: 4/24/2013
AUTHOR: jana





Albury



Kimbell

Albury and Kimbell Speed Limits

Property boundaries, 20m Contours, road names, rail line, address & title points sourced from Land Information NZ. Crown Copyright reserved. Property boundaries accuracy: +/-1m in urban areas, +/-30m in rural areas. Census data sourced from Statistics NZ. Postcodes sourced from NZ Post. Assets, contours, water and drainage information shown is approximate and must not be used for detailed engineering design. Other data has been compiled from a variety of sources and its accuracy may vary, but is generally +/- 1m.

MDC Speed Limits

All other roads

80 km/h

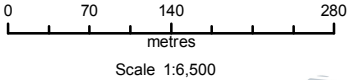
70 km/h

60 km/h

50 km/h

30 km/h

20 km/h



MAP PRODUCED BY:
MacKenzie District Council
PO Box 52, Main Street
FAIRLIE, NZ

ORIGINAL MAP SIZE: A4
DATE: 12/10/2012
AUTHOR: Jana

