

Westland District

SOUTHERN ALPS

MOUNT COOK NATIONAL PARK

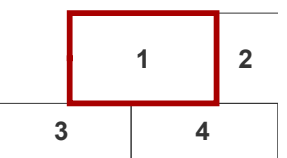
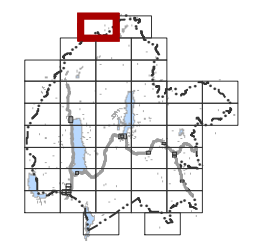
Tasman Saddle

SOUTHERN ALPS

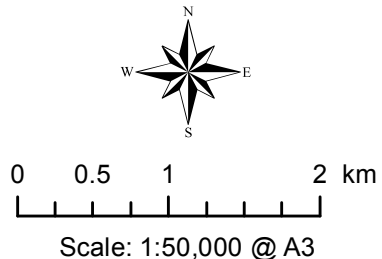
MOUNT COOK NATIONAL PARK



Mackenzie District Council
- District Plan Maps -



Location Diagram



Map Region:

Tasman Saddle

Map No:

1

Map Updated: 11/02/2016

Planning Map 1

PLEASE NOTE:

The Sites of Natural Significance, Scenic Viewing Areas and Lakeside Protection Areas shown on these Planning Maps have been taken from topographical maps (1:50000) prepared as part of Council's decisions on submissions to the Proposed District Plan. The topographical maps are available for inspection at the Mackenzie District Council offices, Main Street, Fairlie.