

Submission form

This form can also be completed online at www.mackenzie.govt.nz

YOUR CONTACT DETAILS (these must be provided for us to consider your submission)

Full name: Kristen Price

Name of organisation (if applicable): Toimata Foundation

Postal address: PO Box 4445
Hamilton Post code: 3247

Telephone: 07 959 7321 Mobile: 021 447 045

Email: kristen.price@toimata.org.nz

HEARINGS (submission hearings will take place on 3 May 2018 in the Council Chambers in Fairlie and on 4 May 2018 at the Events Centre Community Lounge in Twizel.)

Do you wish to present your submission to Council in person? Yes No
Fairlie 3 May or Twizel 4 May (please circle)

Do you wish to present your submission to Council by telephone conference call on 3 May? Yes No

If you answered 'yes', the hearings will start at 9am on 3 and 4 May. You will be allocated 10 minutes to speak. You don't need to read out your written submission as councillors will have read it prior to the hearing. If you plan to present your submission by phone, we will make every reasonable effort to contact you at the number/s you have provided. If you're unable to speak due to unavailability or technical issues, we may not be able to allocate you another time.

Would you prefer to present your submission in the morning or afternoon? Morning Afternoon

Note: We will do our best to give people their preferred time to present, but we can't guarantee everyone will get their preferred time.

Submission: Mackenzie District Council Long Term Plan 2018-2028

Name: Toimata Foundation Contact person: Kristen Price, Operations Manager

Postal Address: PO Box 4445, Hamilton, 3247 Physical Address: Lockwood House, 293 Grey Street, Hamilton

Phone: 07 959 7321 Email: kristen.price@toimata.org.nz We **DO NOT** wish to speak to this submission

Toimata Foundation (a charitable trust) is the national support organisation for Enviroschools and Te Aho Tū Roa. www.toimata.org.nz

This submission covers the following points:

1. What is Enviroschools?

- Enviroschools is a holistic framework that supports the development of resilient, connected and sustainable communities.
- Enviroschools operates nationwide as a collaboration between school communities, Toimata Foundation, Local Government and Central Government with additional community partners.
- It is specifically designed to meet multiple Local Government outcomes and is supported by over 80% of all councils in NZ.
- Enviroschools is proven. It has a 20-year track record and is backed by a 5-year research and evaluation programme.
- It operates at a significant scale. Nationally over 1,100 early childhood education (ECE) centres, primary, intermediate and secondary schools are part of the Enviroschools network – this is a third of all schools and 6% of the large ECE sector.



2. Thank you – Mackenzie District Council (MDC) has been an Enviroschools partner since 2015

- We thank MDC supporting your community to participate in Enviroschools.
- There are four Enviroschools in your district - 3 of the 8 schools (37.5%) and 1 of the 5 ECE centres (20%). This local network is part of the larger regional network of 80 Enviroschools across Canterbury.
- This submission requests that MDC maintains its valuable supporting role in Enviroschools.

3. The Enviroschools implementation model provides value for council partners

Creating sustainable, resilient communities involves bringing together many different skills, perspectives and resources. The implementation approach and collaborative funding model of Enviroschools provides significant value. It is based on **councils providing cornerstone investment in regional implementation that equates to 20-25% of the total annual investment in Enviroschools**, with the balance being funded by other contributors.

Appended: Key Results from the 2017 Enviroschools Census - overview for partners

The following pages have additional information on the three main points from above.

1. What is Enviroschools? A proven programme specifically designed to meet multiple Local Government outcomes

Enviroschools is a holistic framework that supports the development of resilient, connected and sustainable communities. Through Enviroschools children and young people plan, design and implement a wide range of sustainability projects in collaboration with their communities.

The Enviroschools Programme was first developed by councils and community in the Waikato region. It is specifically designed as a programme that empowers children, young people and their communities to take action that addresses a wide range of the key outcomes that councils are also seeing for their communities.

Nationwide, **81% of councils are currently part of the Enviroschools network**. This is made up of:

- 94% of Regional Councils and Unitary Authorities
- 77% of Territorial Authorities

Toimata Foundation has undertaken a 5-year research and evaluation programme with external evaluators Kinnect Group. This has involved two national censuses (2014 & 2017), return on investment analysis and a comprehensive evaluation drawing on multiple sources. Highlights from the research:

- Participating schools and centres are **highly engaged in a wide range of environmental actions and sustainability practices**.
- Evaluators found that Enviroschools is “a very high-performing programme”¹ that provides a **broad range of outcomes** covering environmental, social, cultural, education and economic aspects.
- **11% Return on Investment**. While only a small number of the outcomes can be monetised, so results are conservative, expert analysis showed a ROI of 11% per annum.

A copy of the **Key Results from the 2017 Enviroschools Census** is included with this submission.

2. Recognising your support for the Enviroschools Programme – Thank you.

We would like to acknowledge MDC for supporting young people and their communities to participate in Enviroschools. The Enviroschools in Mackenzie District are:

- Albury School
- Fairlie School
- St Joseph's School (Fairlie)
- Twizel Free Kindergarten

The funding from MDC supports an Enviroschools Facilitator who provides support and guidance to these schools and kindergarten.

Across the Canterbury region there are 80 Enviroschools. The support for the wider network is:

- Regional Coordination and operational budgets are provided by *Environment Canterbury*.
- As with MDC, the *Waimakarere, Selwyn, Timaru, Hurunui, and Waimate District Councils* all fund facilitation of their local schools.
- *Christchurch City Council* has provided some funding through community grants.
- *DOC Canterbury* contribute funding towards events.

We also welcome the newest regional partner the *South Canterbury Kindergarten Association* who will be providing additional in-kind support for Twizel Free Kindergarten.

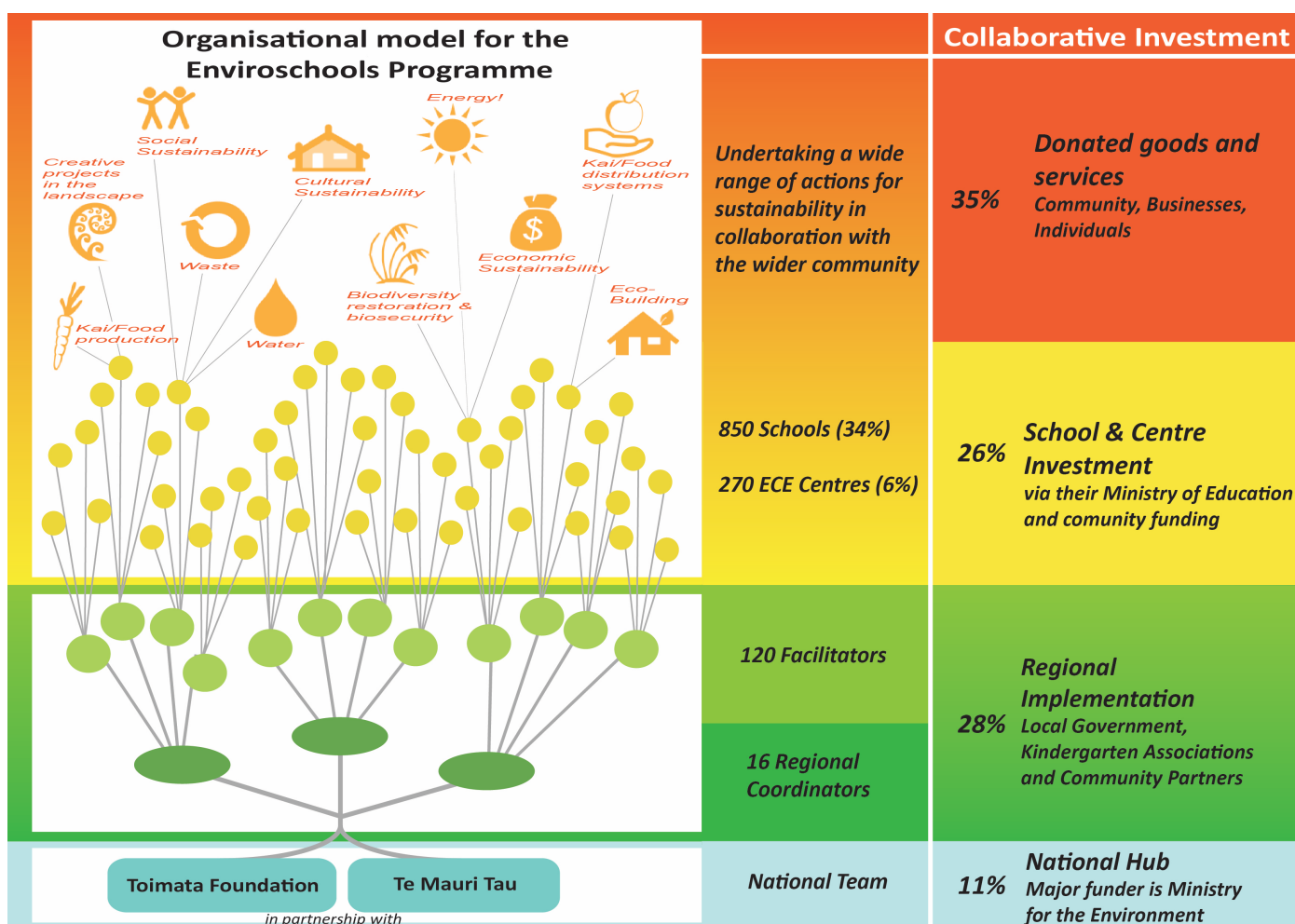
¹ Page 4, The Enviroschools Programme: Evaluation Report, Kinnect Group, 2015

3. The Enviroschools implementation model provides value for council partners

Creating sustainable, resilient communities involves bringing together many different skills, perspectives and resources. The complex environmental, social, cultural and economic challenges facing us today call for a holistic response from a range of different people and organisations working together. Key aspects of the Enviroschools model are:

- **A focus on connecting with, and working, with the wider community.** This results in a substantial level of support from businesses, community organisations and individuals providing donated goods, volunteer time, advice and expertise to the Enviroschools network.
- **Commitment from schools and centres investing their own resources** including staff time, project costs and capital investments. This resourcing comes principally via Ministry of Education funding.
- **Role of the Enviroschools Facilitator** – unlike many programmes in schools that deliver key messages to children in a classroom setting, Enviroschools Facilitators work principally with adults – teachers, caretakers, school management, community members etc. – supporting them to develop their knowledge of sustainability and integrate it into how they undertake their roles.
- **Collaborative approach to regional implementation** with Enviroschools Regional Coordinators and Facilitators are funded by/employed by over 90 organisations - Local Government/Councils, Kindergarten Associations and other community agencies.
- **Toimata has solid support from Central Government** through Ministry for the Environment for our work as a national hub – providing a wide range of support and ongoing programme development.

The graphic below shows the organisational model and the percentage investment provided by different groups for the different aspects of Enviroschools. The percentages are from analysis undertaken in 2014/15 and based on a total annual investment in the programme of \$10.4 million.²



² Model information and monetary values are from The Enviroschools Programme – Return on Investment Scenario Analysis, Kinnect Group, 2015

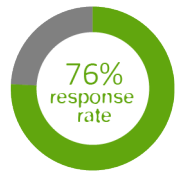
Key Results of the Enviroschools Nationwide Census 2017 Overview for partners - March 2018

In 2017 Toimata Foundation, the national support organisation for the Enviroschools Programme, undertook a nationwide census of the Enviroschools network. This was the second nationwide census, the first was in 2014. In both census projects, Toimata has worked with external evaluators and engaged a specialist advisory panel to ensure a highly robust process. Both census had high response rates and have provided a wealth of valuable information for reporting purposes and for ongoing programme development.

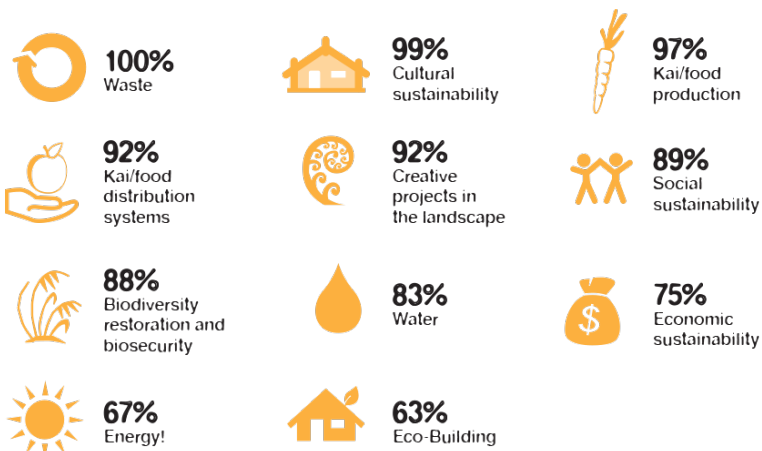
We have produced this initial results overview of the 2017 Census to share with our partners in Central and Local Government. Further reporting will be undertaken in the coming months.

There is significant nationwide reach through a large number of active participants and a focus on collaboration with the community

- **1,100 + Enviroschools** - schools and early childhood education (ECE) centres, representing 34% of schools and 6% of the large ECE sector.
- Actively participating are **153,000 children & young people**, supported by **15,700 school and centre staff** - teachers, caretakers, administration staff, principals, boards of trustees.
- **Reach is growing** – around 50% more children & young people and over 1.5 times the number of adults actively participating compared to 2014.
- **Strong commitment** – high response rate to a comprehensive questionnaire
- **88% are connecting with other organisations in their community** - councils, restoration groups, Iwi, landowners, businesses etc.
- Data shows Enviroschools has a substantial positive influence on the degree of **interaction with families/whānau and the wider community**.



There is a wide range of action for sustainability - environmental, social, cultural & economic



All Enviroschools are engaging in a range of sustainability action areas ...

...and participating in multiple ways within each action area.



* Percentages are the total % of participants who are taking one or more actions in the area

Enviroschools is positively influencing a wide range of sustainability outcomes

The Census asked to what degree participants thought Enviroschools positively influenced 40 different outcomes associated with creating a sustainable world.

In addition to the positive influence on the sustainability of the physical environment, there was also evidence of a positive influence on a wide range of other outcomes. Examples include:



Citizenship

Children and young people initiating and taking action on sustainability issues that are important to them - 74%



Educational

Motivation to learn - 84%
Teachers collaborating - 77%



Social

Ethics being a key part of people's decisions and actions - 79%
Healthy eating and physical activity - 79%



Cultural

Respecting differing beliefs - 80%
Correct te reo Māori pronunciation - 80%



Economic

Integration of sustainability into their strategic and operational planning - 71%

* Percentages are the total % of participants who rated the influence as 'moderate', 'considerable' or 'high' (ratings 3, 4 & 5 on a 5-point scale)

Key aspects of programme design are valued by participants and contribute to effectiveness

The Enviroschools Programme was intentionally designed to be a long-term journey supported by a collaborative network.

The 2017 Census showed the value participants place on key aspects of the programme's design and the relationship of programme design to the effectiveness of the programme. The aspects of programme design strongly reinforced by the census data include:

- **Student-led action**
- **Support from an Enviroschools Facilitator**
- **Long-term nature of an Enviroschools journey**
- **Integration of Māori Perspectives**
- **Focus on community involvement**
- **Emphasis on participants networking with each other**
- **Links made to global issues**
- **The Enviroschools visioning process**



We need to prepare students for their future - sustainability is a no brainer, Enviroschools is the only comprehensive programme to address that.

Teacher 2017 Census