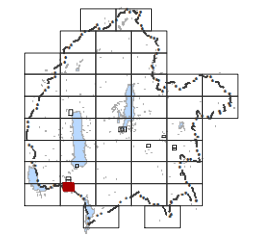


The zone information on this Planning Map has been amended by Plan Change 21 (PC21) which was publicly notified on 23 September 2022. The zones affected are the Residential 1, 2, 3 and 4 Zones, the Village Centre Zone - including the Lake Tekapo Village Centre 1 and Lake Tekapo Village Centre 2 Zones, the Service Zone, the Industrial Zone, the Tourist Zone, and Travellers Accommodation Zone. All other zones and Planning Notations are to remain operative unless expressly stated in PC21. Updated Planning Maps incorporating the new Residential, Commercial and Mixed Use and Industrial Zones in PC21 can be found at: <https://www.mackenzie.govt.nz/council/strategies-plans-and-reports/district-plan-changes-and-consultation>

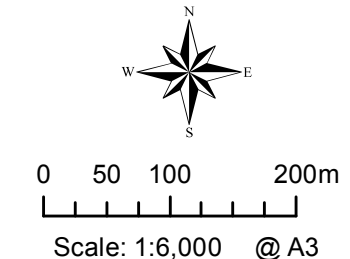


Mackenzie District Council
- District Plan Maps -



	51	33
	52	
53	54	
55	56	38

Location Diagram



Map Region:
Twizel Ruataniwha (East)

Map No:
56
Map Updated: 5/05/2016

Planning Map 56

Schedule of Designations (See appendix A of the Plan)

Designation Number	Description
6	Twizel Substation
22	State Highway 8

Schedule of Sites of Natural Significance (See Appendix I of the Plan)

Site Number	Description
11	Ohau River

Schedule of Heritage Items (See Section 10 of the Plan)

Site Number	Description
H29	Ohau Bridge
H42	Susan Morrison Memorial

PLEASE NOTE:

The Sites of Natural Significance, Scenic Viewing Areas and Lakeside Protection Areas shown on these Planning Maps have been taken from topographical maps (1:50000) prepared as part of Council's decisions on submissions to the Proposed District Plan. The topographical maps are available for inspection at the Mackenzie District Council offices, Main Street, Fairlie.

The zone information on this Planning Map has been amended by Plan Change 21 (PC21) which was publicly notified on 23 September 2022. The zones affected are the Residential 1, 2, 3 and 4 Zones, the Village Centre Zone - including the Lake Tekapo Village Centre 1 and Lake Tekapo Village Centre 2 Zones, the Service Zone, the Industrial Zone, the Tourist Zone, and Travellers Accommodation Zone. All other zones and Planning Notations are to remain operative unless expressly stated in PC21. Updated Planning Maps incorporating the new Residential, Commercial and Mixed Use and Industrial Zones in PC21 can be found at: <https://www.mackenzie.govt.nz/council/strategies-plans-and-reports/district-plan-changes-and-consultation>