

Simons Hill
Simons Pass

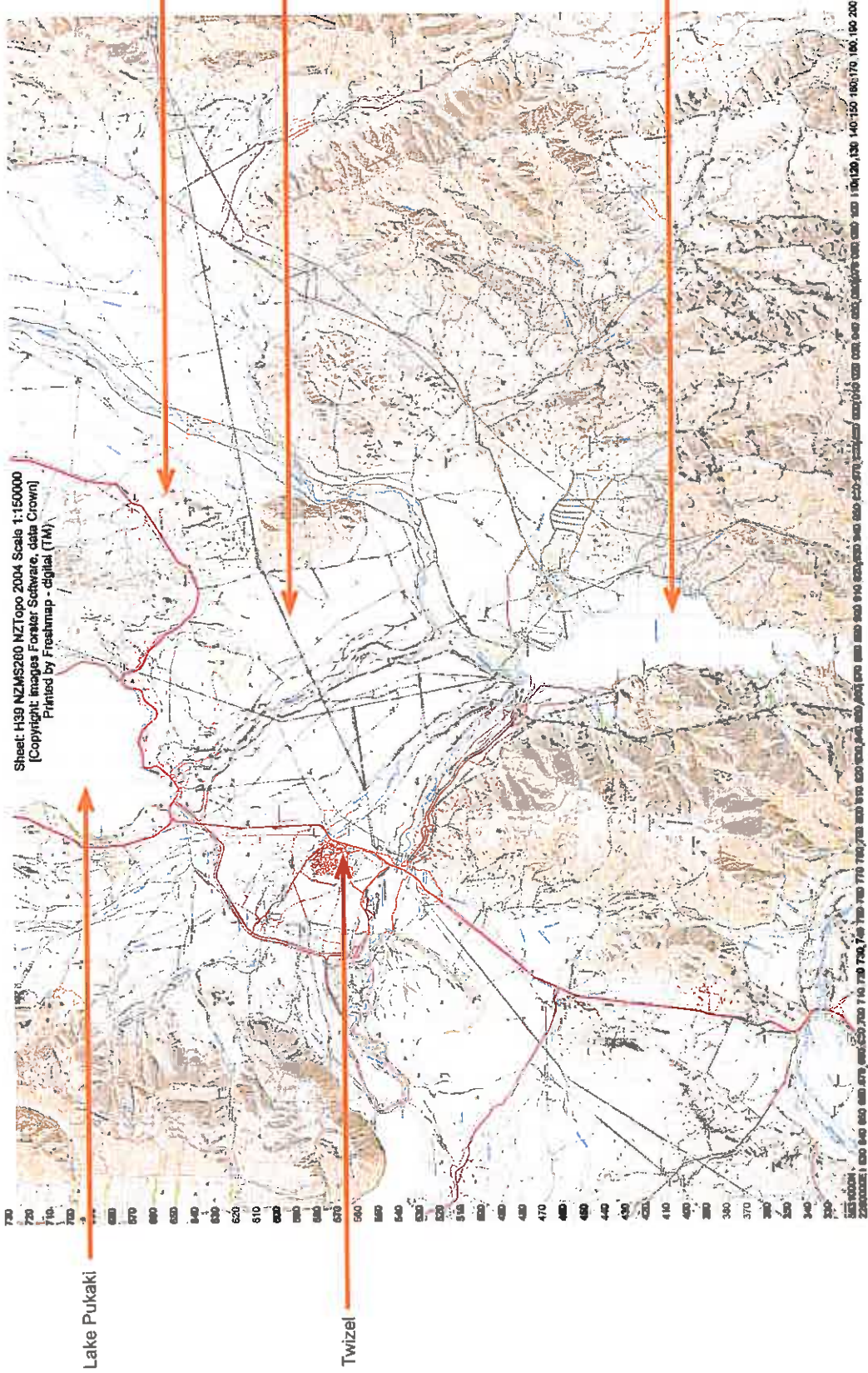
Simons Pass and Simons Hill Stations Mackenzie Basin

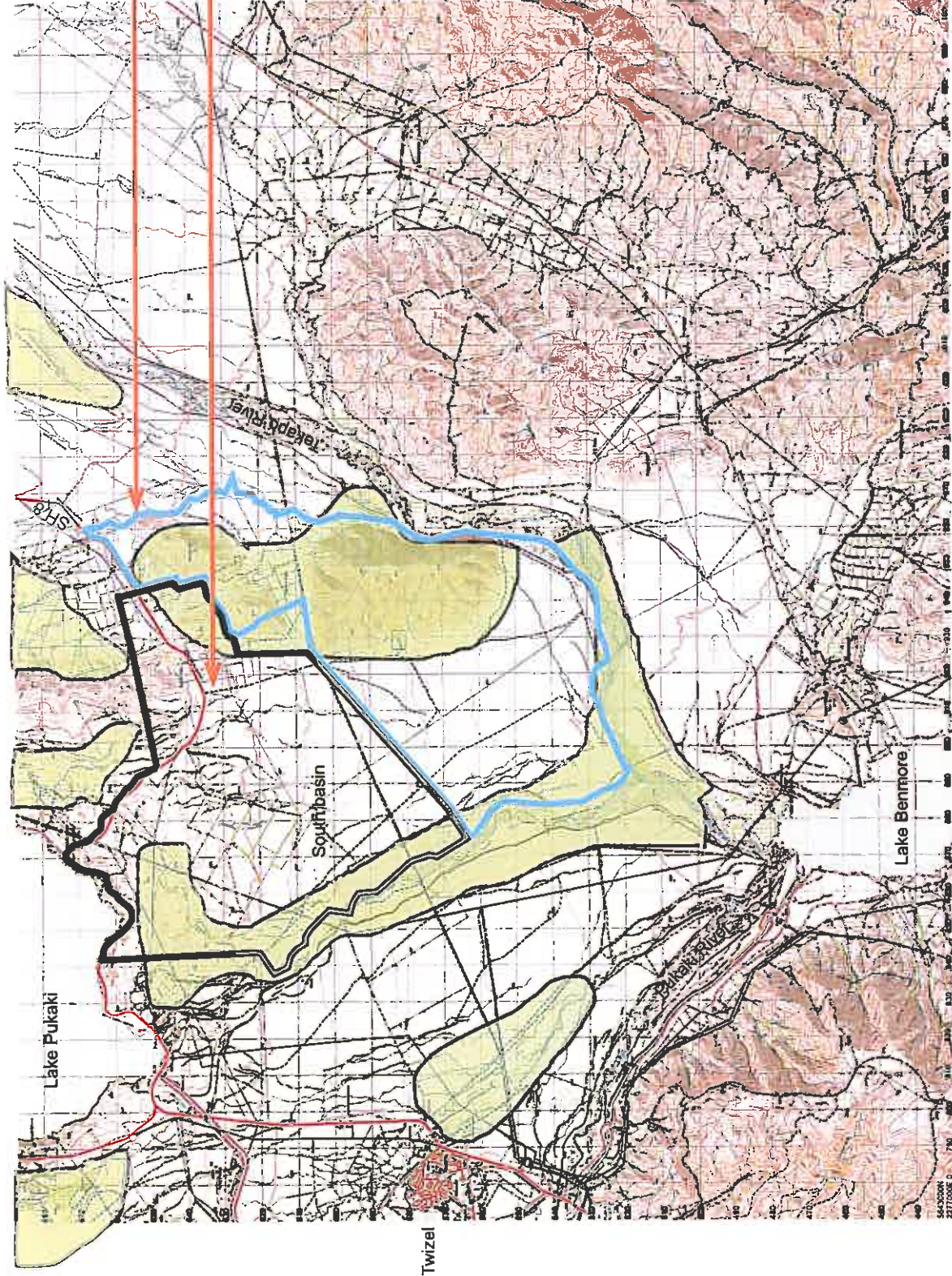


Landscape Assessment Graphic Supplement

September 2008

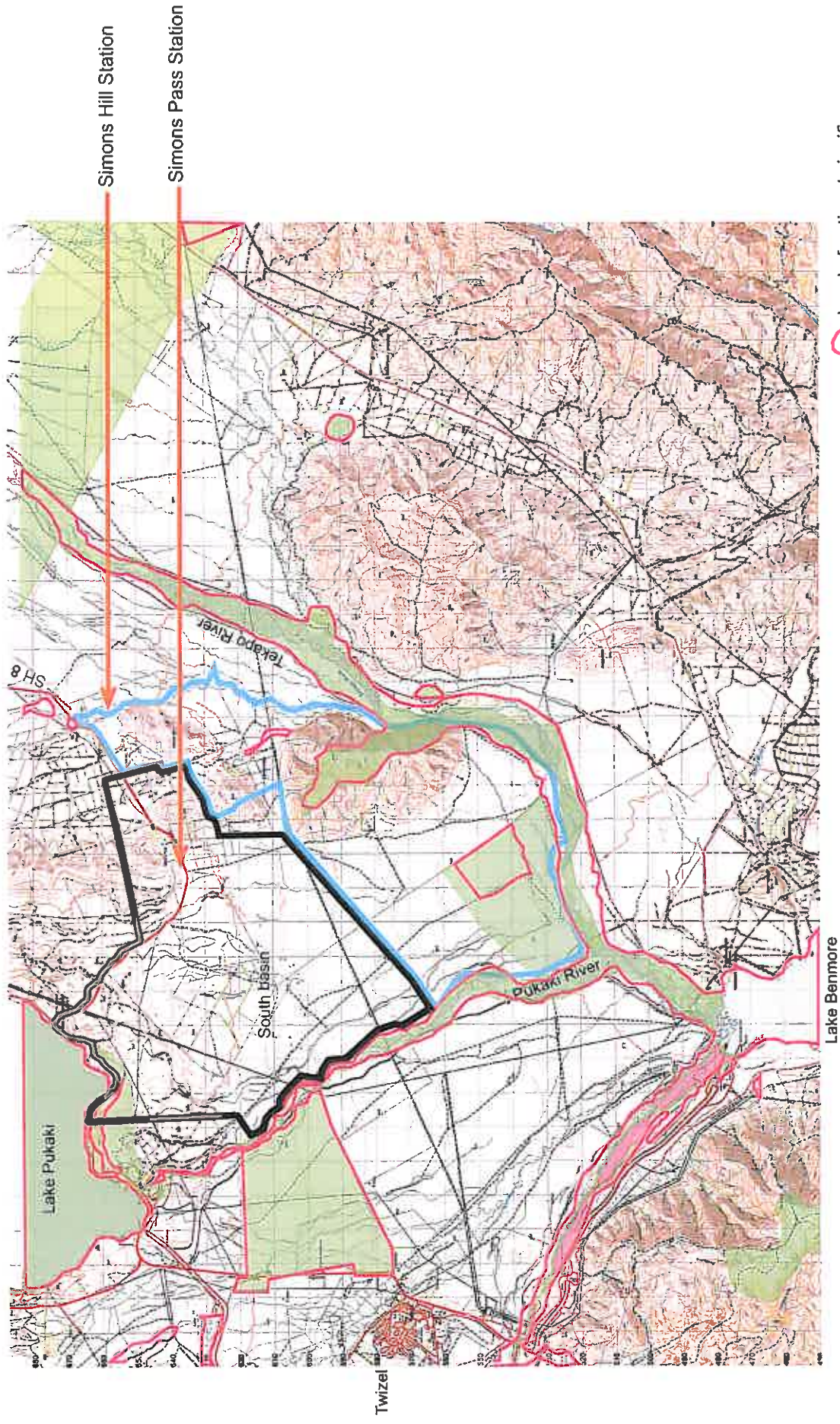
Prepared By:
Chris Glasson Landscape Architects Ltd
BNZ BUILDING, 137 Armagh St
Christchurch 8141, NEW ZEALAND
P.O. Box 13162
Ph. 03 3654699
www.chrisglasson.com





Refers to an interpretation of the Councils development nodes on Simons Pass and Simons Hill Stations





- Land of national significance
- Recommended Areas of Protection



4.3 Shelter belt on Simons Pass Station



4.2 Integrated amenity tree planting



4.4 14 year old shelter trees at 6m in height



4.5 Potential for integrated development on Simons Pass Station



4.6 Tekapo River, southern boundary of Simons Hill Station



4.1 Discrete areas for development could occur adjacent to landforms





4.7 Undulations across Simons Pass Station



4.8 Integrated forestry adjacent to Simons Pass Station



4.9 Undulating moraine hills at northern end of Simons Pass Station



4.10 Undulating moraine hills at northern end of Simons Pass Station

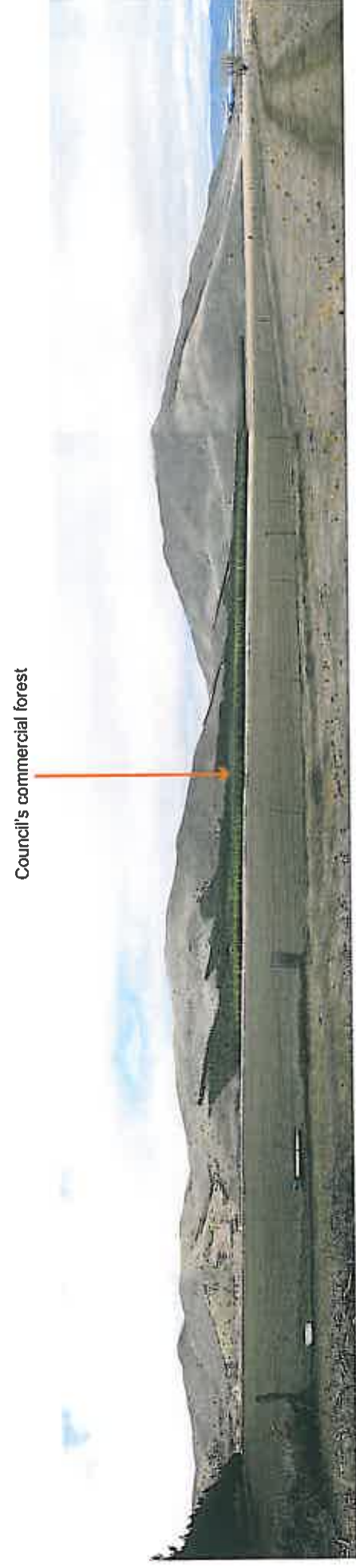




4.13 "View of Views" at the northern end of Simons Pass Station. A view to be embraced.



5.1 View from hillside of Simons Pass Station looking westwards.



5.2 View adjacent to SHB of Simons Pass Station looking eastwards.





5.3 Simons Pass Station on the river flats.



5.4 Wilding pines and briar rose on the river flats of Simons Pass Station.



5.5 The river flats lacks good land cover to reduce erosion.



5.6 The outstanding landscape is the Ben Ohau Range and the Southern Alps.





5.7 Southern end of the "South Basin" on Simons Hill Station. Poor quality land cover.



5.8 Poor quality land cover near the boundary between the two Stations.





5.9 An undulating and stony landscape throughout the river flats, looking westwards along the powerline.



5.10 Pukaki River bed on LHS, a development node in the Council's landscape assessment.



5.11 The northern rolling moraine hills of Simons Pass Station has more tussock cover.

Ben Ohau Range



5.12 Moraine hills classified in the Council's landscape assessment as a development node.



SH8



5.13 View of Lake Pukaki and Mount Cook. Steep slopes from the lake to the ridgeline should remain free of development.





5.14 Very low visual impact south of the front ridgeline, adjacent to Lake Pukaki.



5.15 Potential for development on the moraine hills, south of Lake Pukaki.



5.16 From SH8 looking southwards to Benmore Range and Tekapo River.



5.17 Simons Pass Station. Green pasture integrated into tussock lands and mountains.

Tekapo River



5.18 Discrete valleys for development on Simons Hill Station.

Tekapo River



5.19 Potential land improvement for flats of Simons Hill Station.

shelter belts on SH8



5.20 Low visual impact farm land improvement on Simons Hill Station.



5.21 The home block on Simons Hill Station.



6.1 Mounding and planting around houses within Mt Cook National Park



6.2 Mounding and planting around houses within Mt Cook National Park



6.3 One storey houses and recessive roof colours successfully integrate houses into Mt Cook National Park



6.4 Bold mounding integrates housing



6.5 Club House at Hills Golf Course. Bold building forms in an alpine environment



6.6 Club House at Hills Golf Course





6.7 Successfully integrated building forms at the Hills Golf Course Lake Hayes alpine environment.



7.1 A cultural landscape successfully combines with the alpine landscape at Glentanner Station, Mackenzie Basin.



7.2 Green pasture successfully fits into the tussock lands of the Maniototo.

