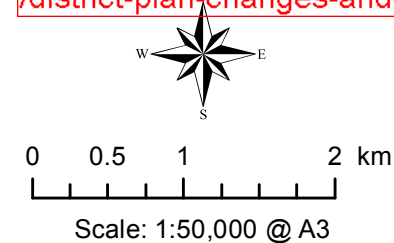
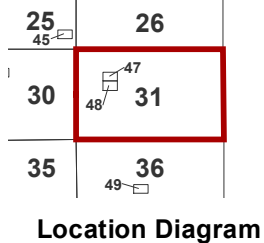
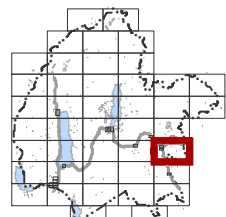


Mackenzie District Council
 - District Plan Maps -



Map Region

Fairlie

Map No:

31

Map Updated: 14/04/2016

Planning Map 31

Schedule of Designations (See appendix A of the Plan)

Designation Number	Description
22	State Highway 8
23	State Highway 79
39	Oxidation Pond – Fairlie
62	Water Supply Intake – Spur Road
65	Water Supply Intake – School Road

Schedule of Heritage Items (See Section 10 of the Plan)

Site Number	Description
H8	St David's Church, Raincliff
H21	Eversley Homestead
H22	Strathconan (dwelling)
H23	Strathconan, Gazebo
H54	Allendate Station Sheds
H55	Burke Chimney
H61	Raincliff Homestead
H62	Gudex Homestead
H75	Cob Cottage Ruins, Fairlie
H90	Memorial to Percy Johnson
H91	Pioneer Park Entrance Gates

Schedule of Sites of Natural Significance (See Appendix I of the Plan)

Site Number	Description
78	Pioneer Park
79	Ophi river
80	Tramway Bush

Schedule of Scenic Viewing Areas (See Appendix J of the Plan)

Site Number	Description
SV21	Winscombe Hill

Schedule of Protected Trees (See appendix J of the Plan)

Site Number	Description
T1	<i>Populus deltoids</i> (Poplar)
T5	<i>Podocarpus totara</i> (Totara); <i>Populus deltoids</i> (Poplar)
T39	<i>Ulmus procera</i> (Golden Elm)
T71	Peace Avenue Trees

PLEASE NOTE:

The Sites of Natural Significance, Scenic Viewing Areas and Lakeside Protection Areas shown on these Planning Maps have been taken from topographical maps (1:50000) prepared as part of Council's decisions on submissions to the Proposed District Plan. The topographical maps are available for inspection at the Mackenzie District Council offices, Main Street, Fairlie.

The zone information on this Planning Map has been amended by Plan Change 21 (PC21) which was publicly notified on 23 September 2022. The zones affected are the Residential 1, 2, 3 and 4 Zones, the Village Centre Zone - including the Lake Tekapo Village Centre 1 and Lake Tekapo Village Centre 2 Zones, the Service Zone, the Industrial Zone, the Tourist Zone, and Travellers Accommodation Zone. All other zones and Planning Notations are to remain operative unless expressly stated in PC21. Updated Planning Maps incorporating the new Residential, Commercial and Mixed Use and Industrial Zones in PC21 can be found at: <https://www.mackenzie.govt.nz/council/strategies-plans-and-reports/district-plan-changes-and-consultation>