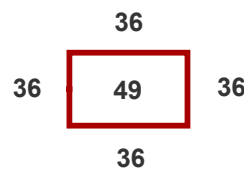
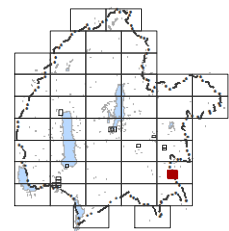


The zone information on this Planning Map has been amended by Plan Change 21 (PC21) which was publicly notified on 23 September 2022. The zones affected are the Residential 1, 2, 3 and 4 Zones, the Village Centre Zone - including the Lake Tekapo Village Centre 1 and Lake Tekapo Village Centre 2 Zones, the Service Zone, the Industrial Zone, the Tourist Zone, and Travellers Accommodation Zone. All other zones and Planning Notations are to remain operative unless expressly stated in PC21. Updated Planning Maps incorporating the new Residential, Commercial and Mixed Use and Industrial Zones in PC21 can be found at: <https://www.mackenzie.govt.nz/council/strategies-plans-and-reports/district-plan-changes-and-consultation>

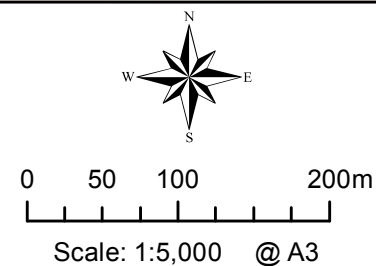
Timaru District



**Mackenzie District Council**  
- District Plan Maps -



Location Diagram



Map Region:

**Albury Town**

Map No:

**49**

Map Updated: 4/03/2016

## Planning Map 49

### Schedule of Designations (See Appendix A of the Plan)

Designation Number	Description
8	Albury Primary School
22	State Highway 8
27	Albury Exchange
34	Landfill (Closed), Albury
43	Cemetery, Albury

### Schedule of Heritage Items (See Section 10 of the Plan)

Site Number	Name
H16	Butterworth Accommodation House (Former)
H37	Albury War Memorial
H73	Catholic Church, Albury

### Schedule of Protected Trees(See Appendix J of the Plan)

Site Number	Name
T17	<i>Fraxinus excelsior</i> (Englis Ash); <i>Ulmus procera</i> (English Elm); <i>Malus spp</i> (Ornamental Apple); <i>Ulmus pumila</i> (Elm)

### PLEASE NOTE:

The Sites of Natural Significance, Scenic Viewing Areas and Lakeside Protection Areas shown on these Planning Maps have been taken from topographical maps (1:50000) prepared as part of Council's decisions on submissions to the Proposed District Plan. The topographical maps are available for inspection at the Mackenzie District Council offices, Main Street, Fairlie.

The zone information on this Planning Map has been amended by Plan Change 21 (PC21) which was publicly notified on 23 September 2022. The zones affected are the Residential 1, 2, 3 and 4 Zones, the Village Centre Zone - including the Lake Tekapo Village Centre 1 and Lake Tekapo Village Centre 2 Zones, the Service Zone, the Industrial Zone, the Tourist Zone, and Travellers Accommodation Zone. All other zones and Planning Notations are to remain operative unless expressly stated in PC21. Updated Planning Maps incorporating the new Residential, Commercial and Mixed Use and Industrial Zones in PC21 can be found at: <https://www.mackenzie.govt.nz/council/strategies-plans-and-reports/district-plan-changes-and-consultation>