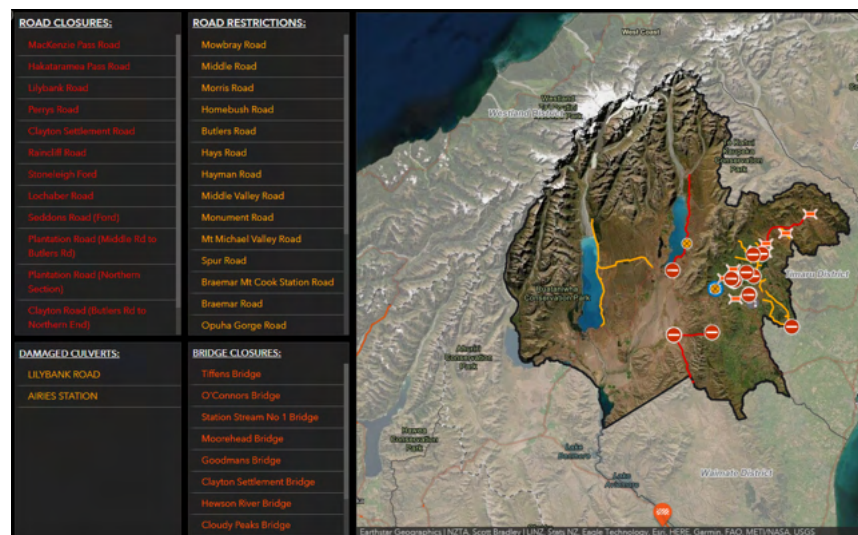




Metservice issued a Red Warning for heavy rain over the weekend of the 29/30 May and their prediction was very accurate. Up to 300mm of rain fell in some areas of the Fairlie Basin catchment. Council have invested in stormwater infrastructure which performed as expected, and the main townships were not impacted too heavily. Some farms in the Ashwick/Clayton/Lochaber areas were significantly impacted, along with widespread damage to a number of roads, bridge approaches and culverts. Council staff and contractors are working to assess damage, and repairs are already underway. In the meantime, please exercise caution on rural roads and follow diversions and closures that are in place.

Details of road closures and restrictions (which can change at short notice) can be found on our interactive dashboard by following this link: <https://bit.ly/3g68VhT>.

If you're aware of flood damage to Council assets that you think we may not be aware of, please let us know! You can give us a call (toll free) on 0800 685 8514 or email info@mackenzie.govt.nz and we can send someone to investigate.



Emergency Operations at Mackenzie District Council

Mackenzie District Council staff and a number of volunteers are trained to operate an Emergency Operations Centre which works with emergency services and other agencies to help coordinate the response to larger events. Functions including Intelligence, Planning, Operations, Communication and Logistics work together to ensure we understand what is happening in the field, and resources are prioritised and deployed appropriately.

Mackenzie District Council are very grateful to Whitestone Contracting and all those involved in the response who worked long hours and over the weekend in challenging conditions to ensure the best outcomes for our communities.



Flood Response: NN90 Visit

If we're in Fairlie on Friday afternoon and didn't see the helicopter arrive you probably heard it! A New Zealand Air Force NN90 tasked on behalf of the Canterbury Civil Defence Group arrived from Ashburton, after a quick stop in Timaru to pick up a river engineer from Environment Canterbury. The helicopter took representatives from local Civil Defence, Federated Farmers and Rural Support Trust up to the top of Lochaber Road to pick up a local farmer and view damage caused by the Orari River which burst its banks and caused substantial damage to farm assets and roading in the area. Our photographer saw one of the crew carrying a white box onboard which we are reliably informed contained pies from the Fairlie Bakehouse. Good on Fairlie for doing its bit to support the troops! And we're very grateful to the Defence Force for their assistance!



Support for Rural Communities

For initial help or updates on farming issues, get in touch with your industry body:

- **DairyNZ** www.dairynz.co.nz/business/adverse-events or **0800 4 324 7969**
- **Beef & Lamb** beeflambnz.com or **0800 233 352**
- **Federated Farmers** 0800 327 646

Rural Support Trusts have local people who are trained to offer assistance and support. Their help is free and confidential. Phone **0800 787 254** or visit www.rural-support.org.nz.

See also: www.mpi.govt.nz/funding-rural-support/adverse-events.

If you think you might be eligible for EQC assistance please visit their website and read their fact sheet: https://www.eqc.govt.nz/sites/public_files/documents/factsheet/Damage-to-your-farm-factsheet_270619.pdf

All of the above information and more is available on the Mackenzie District Council website - or give us a call on 0800 685 8514. We're here to help.



Temporary Road Closures

The following roads will be closed for the running of the 2021 Rally of South Canterbury on Saturday 19 June. Roads will be impacted between 10am and 4.45pm but each road will only be closed for approximately four hours.

- Spur Road
- Middle Valley Road
- Chamberlain Road
- Monavale Road
- Rocky Gully Road
- Gorge Road
- Askins Road
- Limestone Road
- Cricklewood Road
- Coal Pit Road
- Rutherford Road

These closures will be enforced by approved Temporary Traffic Management Plans allowing for local residents to be marshalled through the road closures. Please contact Council on the number below if you have questions or concerns.

The Rally is a great spectator event for the whole family - why not make a day of it! For further details you can visit the South Canterbury Car Club website at: www.southcanterburycarclub.org.nz.

Dates of Upcoming Meetings

22 June	Extraordinary Council Meeting	Council Chambers, Fairlie, 9.30am
29 June	Council Meeting	Council Chambers, Fairlie, 9.30am
12 July	Twizel Community Board	Event Centre Lounge, Twizel, 3pm
13 July	Extraordinary Council Meeting	Council Chambers, Fairlie, 9.30am
13 July	Audit & Risk Committee	Follows Council meeting
13 July	CE's Performance Committee	Follows Audit & Risk Committee
14 July	Tekapo Community Board	Community Hall, Tekapo, 3pm
15 July	Fairlie Community Board	Council Chambers, Fairlie, 4.30pm
3 August	Council Meeting	Council Chambers, Fairlie, 9.30am
17 August	Engineering & Services Committee	Council Chambers, Fairlie, 9.30am
17 August	Commercial & Economic Development Committee	Follows previous committee
17 August	Strategy Committee	Follows previous committee
17 August	Planning & Regulations Committee	Follows previous committee
24/25 August	LTP Hearings (if required)	Council Chambers, Fairlie & zoom

Committee meetings follow the preceding meeting and so start times will vary. The public are welcome to attend meetings. Occasionally times and venues change so please call and check beforehand. There is a public forum at the beginning of each Council and Community Board meeting and members of the public are invited to address Elected Members on relevant matters. Agendas are available on the Council website at least two working days before each meeting.