

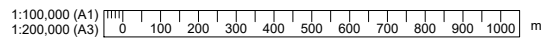
LEGEND

- Hydro-electricity inundation hazard areas
- Farm base area
- Manuka Terrace - Rural Residential Zone
- Mackenzie Basin Subzone Boundary
- Sheet Locations

General Notes

1. The Hydro-electricity inundation hazard areas are for District Plan purposes only and do not identify, warrant, or guarantee the safety of any area in the unlikely event of a dam or canal breach. Best practice methods have been used to identify all potentially affected areas, however actual areas affected could differ, for example if flow paths change due to landform changes.
2. Subject to note 1, the Hydro-electricity inundation hazard areas identify areas that could potentially be affected by inundation in the unlikely event of a dam or canal breach only and do not reflect any natural hazards, for example flooding from rivers.

Background mapping (1:50,000 scale) sourced from the LINZ Data Service and licensed by LINZ for re-use under the Creative Commons Attribution 3.0 New Zealand Licence.



Revision	Amendment	Approved	Revision Date
R1	Potential floodable areas on sheets 23,24,25 refined	M.G.W.	Aug 2015
R2	Potential floodable areas on sheet 25 refined	G.W.	2 / 2016
R3	Hazard area refined	G.W.	26 / 2 / 16
R4	Hazard areas on sheets 26 & 27 refined	G.W.	11 / 3 / 16



OPUS
Wellington Office
+64 4 471 7000

PO Box 12-003, Thorndon
Wellington 6144
New Zealand

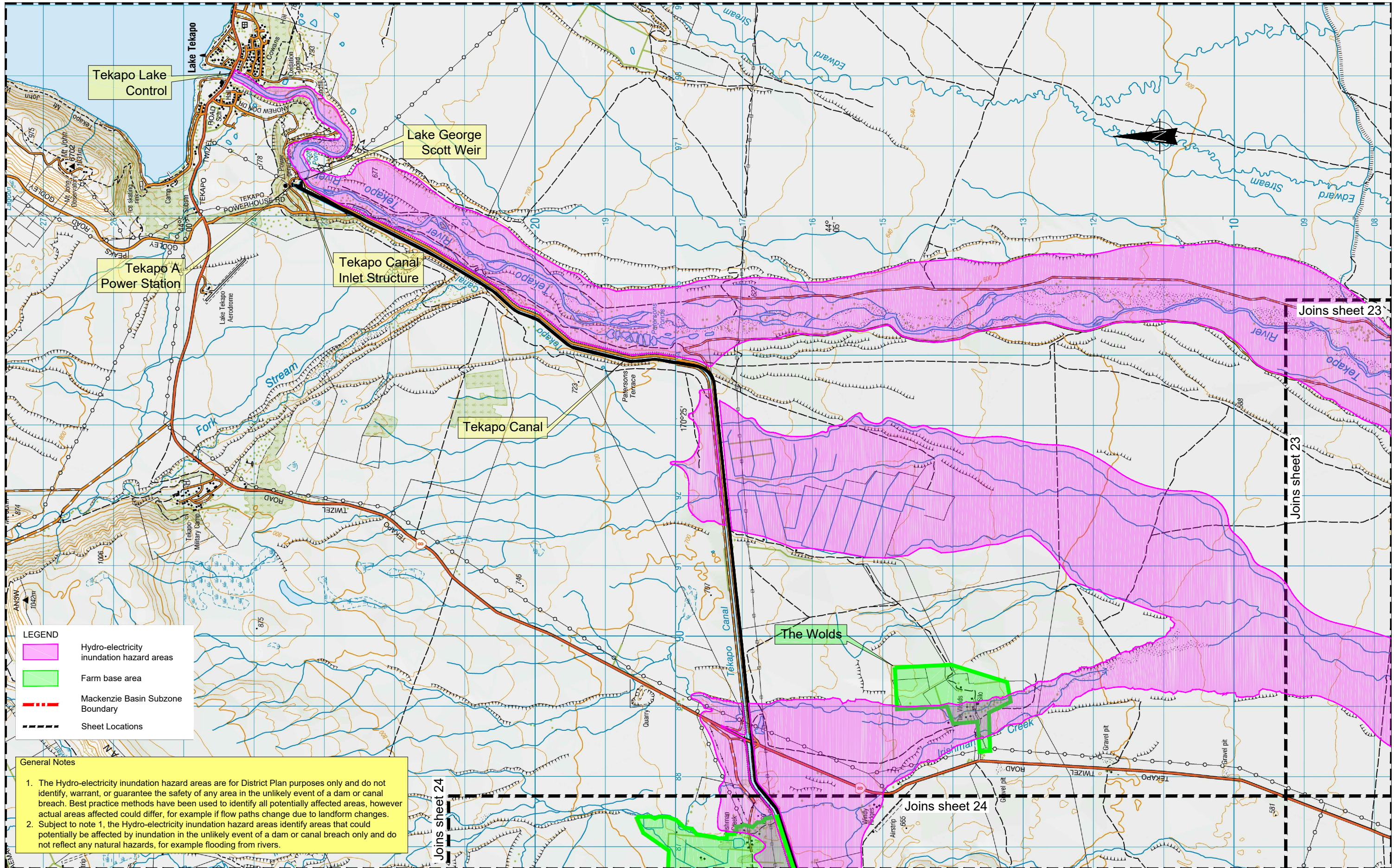
Drawn Ken Mercer	Designed H Smith (Civil) W Vesile (Structural)	Approved Grant Webby	Revision Date August 2015
---------------------	--	-------------------------	------------------------------

Project No. 3-51049.03 Scale 1:100,000(A1) 1:200,000(A3)

Project
HYDRO-ELECTRICITY INUNDATION HAZARD AREA MAPS FOR MACKENZIE DISTRICT COUNCIL PLAN CHANGE 13

Sheet
OVERVIEW MAP

Drawing No. 6/3434/1/6504	Sheet No. 21	Revision R4
---------------------------	--------------	-------------



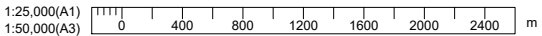
LEGEND

	Hydro-electricity inundation hazard areas
	Farm base area
	Mackenzie Basin Subzone Boundary
	Sheet Locations

General Notes

1. The Hydro-electricity inundation hazard areas are for District Plan purposes only and do not identify, warrant, or guarantee the safety of any area in the unlikely event of a dam or canal breach. Best practice methods have been used to identify all potentially affected areas, however actual areas affected could differ, for example if flow paths change due to landform changes.
2. Subject to note 1, the Hydro-electricity inundation hazard areas identify areas that could potentially be affected by inundation in the unlikely event of a dam or canal breach only and do not reflect any natural hazards, for example flooding from rivers.

Background mapping (1:50,000 scale) sourced from the LINZ Data Service and licensed by LINZ for re-use under the Creative Commons Attribution 3.0 New Zealand Licence.



Revision	Amendment	Approved	Revision Date
R1	Changes to legend and general notes	M.G.W.	Aug 2015



OPUS
Wellington Office
+64 4 471 7000

PO Box 12-003, Thorndon
Wellington 6144
New Zealand

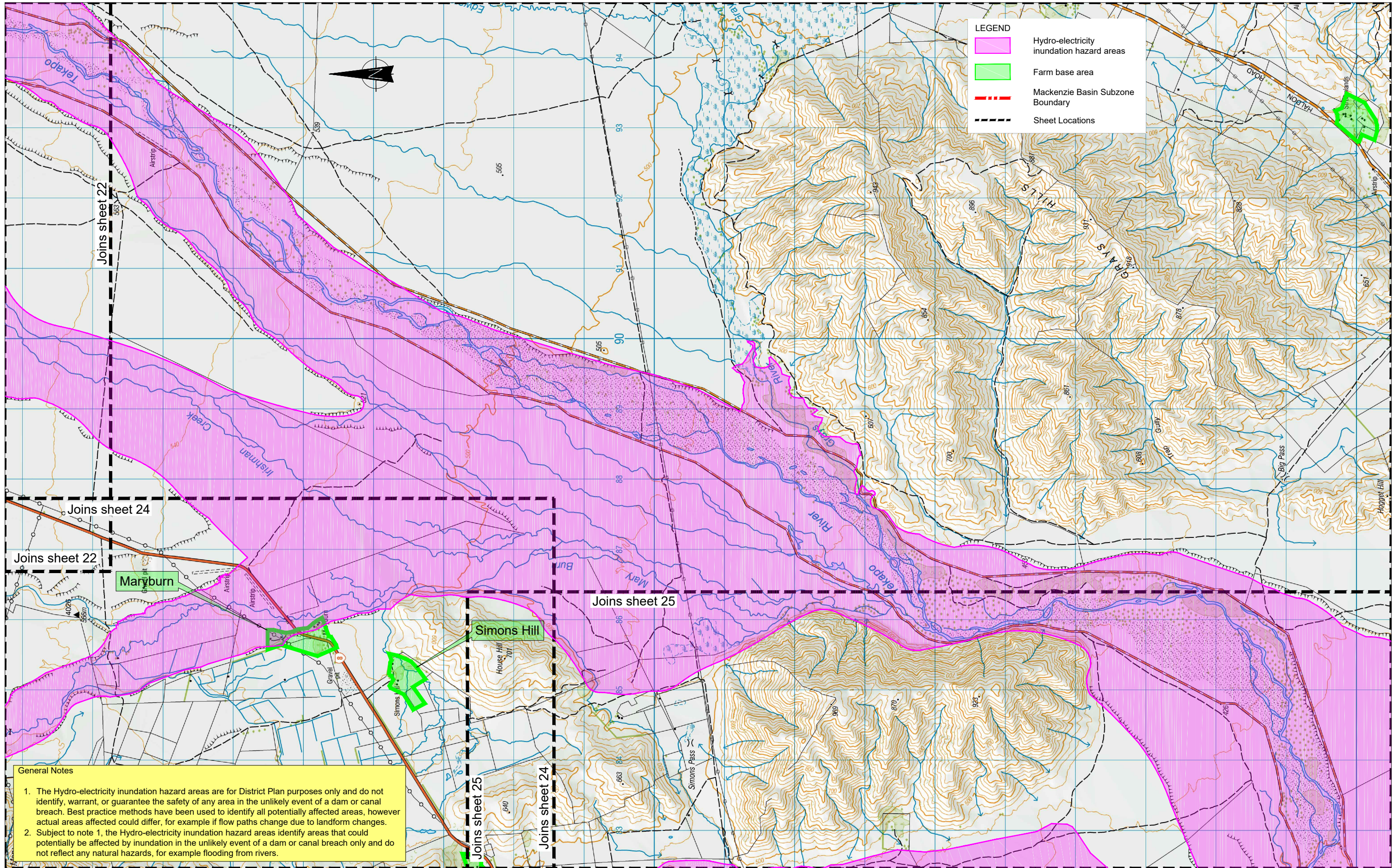
Drawn Ken Mercer	Designed H Smith (Lead) W Vesile (Draftsman)	Approved Grant Webby	Revision Date August 2015
---------------------	--	-------------------------	------------------------------

Project No. 3-53213.00 Scale 1:25,000(A1), 1:50,000(A3)

HYDRO-ELECTRICITY INUNDATION HAZARD AREA MAPS FOR MACKENZIE DISTRICT COUNCIL PLAN CHANGE 13

Sheet
TEKAPO LAKE CONTROL / TEKAPO A POWER STATION / TEKAPO CANAL INLET STRUCTURE / TEKAPO CANAL

Drawing No. 6/3434/1/6504	Sheet No. 22	Revision R1
---------------------------	--------------	-------------



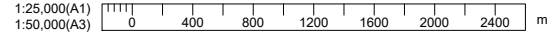
LEGEND

- Hydro-electricity inundation hazard areas
- Farm base area
- Mackenzie Basin Subzone Boundary
- Sheet Locations

General Notes

1. The Hydro-electricity inundation hazard areas are for District Plan purposes only and do not identify, warrant, or guarantee the safety of any area in the unlikely event of a dam or canal breach. Best practice methods have been used to identify all potentially affected areas, however actual areas affected could differ, for example if flow paths change due to landform changes.
2. Subject to note 1, the Hydro-electricity inundation hazard areas identify areas that could potentially be affected by inundation in the unlikely event of a dam or canal breach only and do not reflect any natural hazards, for example flooding from rivers.

Background mapping (1:50,000 scale) sourced from the LINZ Data Service and licensed by LINZ for re-use under the Creative Commons Attribution 3.0 New Zealand Licence.



Revision	Amendment	Approved	Revision Date
R1	Potential floodable areas on sheets 23,24,25 refined.	M.G.W.	Aug 2015



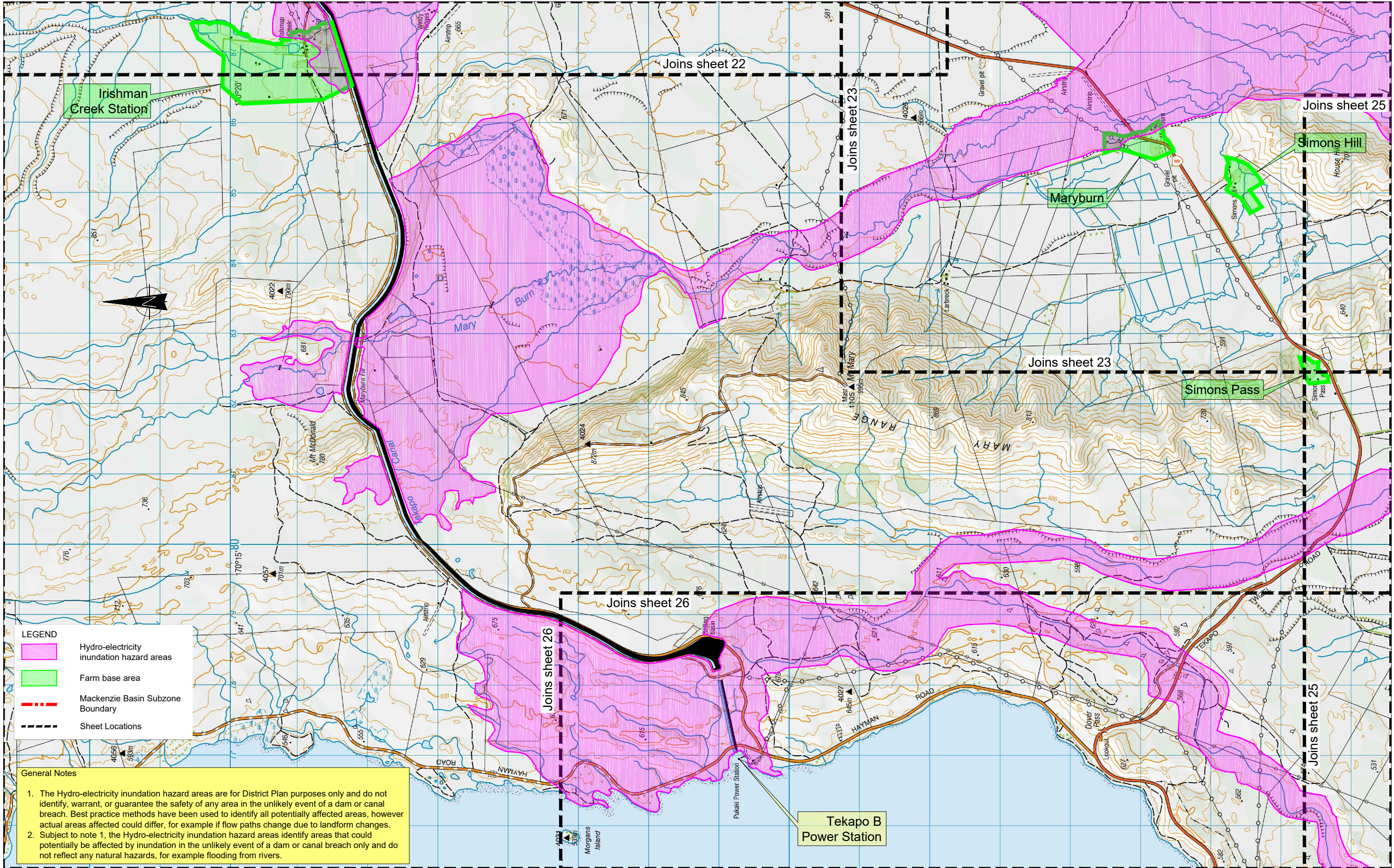
OPUS
Wellington Office
+64 4 471 7000
PO Box 12-003, Thorndon
Wellington 6144
New Zealand

Drawn Ken Mercer	Designed H Smith (Civil) W Vesilic (Structural)	Approved Grant Webby	Revision Date August 2015
Project No. 3-51049.03	Scale 1:25,000(A1), 1:50,000(A3)	Drawing No. 6/3434/1/6504	

HYDRO-ELECTRICITY INUNDATION HAZARD AREA MAPS FOR MACKENZIE DISTRICT COUNCIL PLAN CHANGE 13

TEKAPO RIVER / IRISHMAN CREEK / MARY BURN

Sheet No. 23	Revision R1
-----------------	----------------



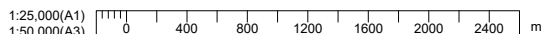
LEGEND

- Hydro-electricity inundation hazard areas
- Farm base area
- Mackenzie Basin Subzone Boundary
- Sheet Locations

General Notes

1. The Hydro-electricity inundation hazard areas are for District Plan purposes only and do not identify, warrant, or guarantee the safety of any area in the unlikely event of a dam or canal breach. Best practice methods have been used to identify all potentially affected areas, however actual areas affected could differ, for example if flow paths change due to landform changes.
2. Subject to note 1, the Hydro-electricity inundation hazard areas identify areas that could potentially be affected by inundation in the unlikely event of a dam or canal breach only and do not reflect any natural hazards, for example flooding from rivers.

Background mapping (1:50,000 scale) sourced from the LINZ Data Service and licensed by LINZ for re-use under the Creative Commons Attribution 3.0 New Zealand Licence.



Revision	Amendment	Approved	Revision Date
R1	Potential floodable areas on sheets 23,24,25 refined.	M.G.W.	Aug 2015



OPUS
Wellington Office
+64 4 471 7000
PO Box 12-003, Thorndon
Wellington 6144
New Zealand

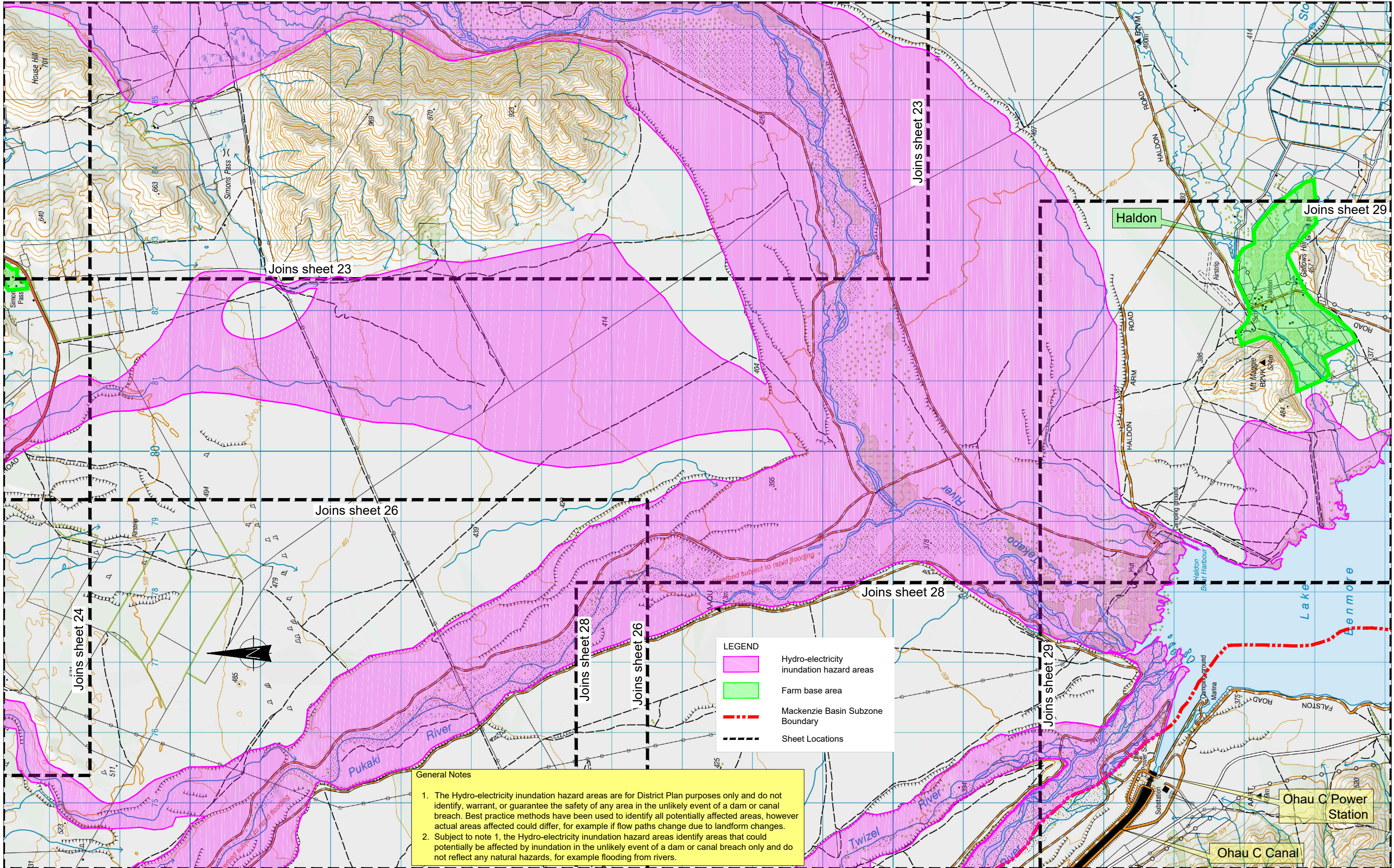
Drawn	Designed	Approved	Revision Date
Ken Mercer	H Smith (Lead)	Grant Webby	August 2015
	W Vesile (Contract)		

Project: HYDRO-ELECTRICITY INUNDATION HAZARD AREA MAPS FOR MACKENZIE DISTRICT COUNCIL PLAN CHANGE 13

Sheet: **TEKAPO CANAL CHAINAGE 13km TO TEKAPO B POWER STATION STILLING BASIN / TEKAPO B POWER STATION**

Drawing No. 6/3434/1/6504

Scale: 1:25,000(A1), 1:50,000(A3)	Sheet No. 24	Revision R1
-----------------------------------	--------------	-------------



300 mm
200
100
50
0 10 mm



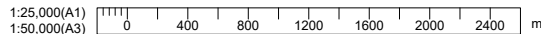
LEGEND

- Hydro-electricity inundation hazard areas
- Farm base area
- Mackenzie Basin Subzone Boundary
- Sheet Locations

General Notes

1. The Hydro-electricity inundation hazard areas are for District Plan purposes only and do not identify, warrant, or guarantee the safety of any area in the unlikely event of a dam or canal breach. Best practice methods have been used to identify all potentially affected areas, however actual areas affected could differ, for example if flow paths change due to landform changes.
2. Subject to note 1, the Hydro-electricity inundation hazard areas identify areas that could potentially be affected by inundation in the unlikely event of a dam or canal breach only and do not reflect any natural hazards, for example flooding from rivers.

Background mapping (1:50,000 scale) sourced from the LINZ Data Service and licensed by LINZ for re-use under the Creative Commons Attribution 3.0 New Zealand Licence.



Revision	Amendment	Approved	Revision Date
R1	Potential floodable areas on sheets 23,24,25 refined	M.G.W.	Aug 2015
R2	Potential floodable areas on sheet 25 refined	G.W.	2 / 2016



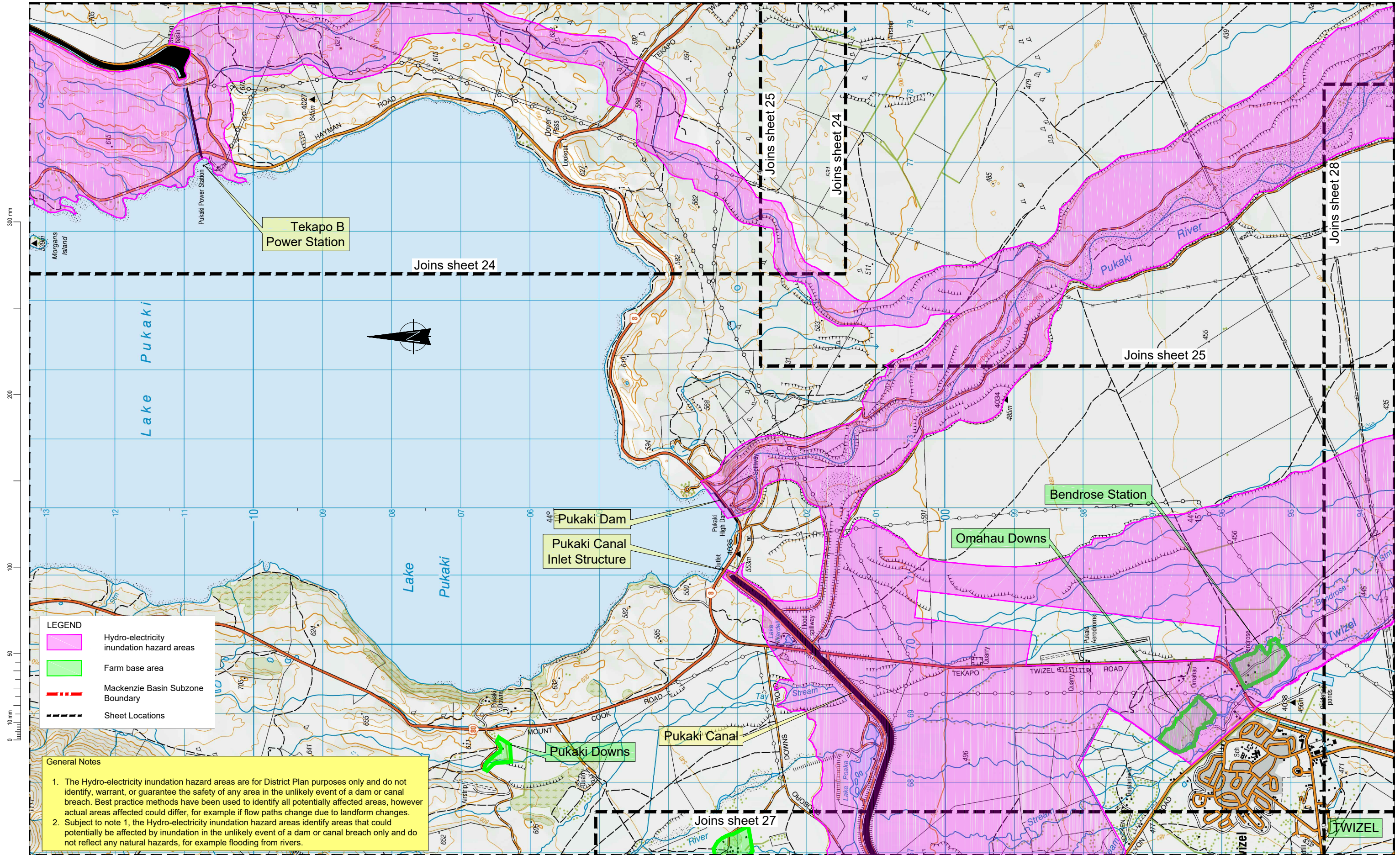
OPUS
Wellington Office
+64 4 471 7000
PO Box 12-003, Thorndon
Wellington 6144
New Zealand

Drawn	Designed	Approved	Revision Date
Ken Mercer	H Smith (Lead) W Vesile (Draftsman)	Grant Webby	August 2015
Project No.	Scale		
3-51049.03	1:25,000(A1), 1:50,000(A3)		

Project
HYDRO-ELECTRICITY INUNDATION HAZARD AREA MAPS FOR MACKENZIE DISTRICT COUNCIL PLAN CHANGE 13

Sheet
PUKAKI RIVER / TEKAPO RIVER / LAKE BENMORE

Drawing No.	Sheet No.	Revision
6/3434/1/6504	25	R2



LEGEND

- Hydro-electricity inundation hazard areas
- Farm base area
- Mackenzie Basin Subzone Boundary
- Sheet Locations

General Notes

1. The Hydro-electricity inundation hazard areas are for District Plan purposes only and do not identify, warrant, or guarantee the safety of any area in the unlikely event of a dam or canal breach. Best practice methods have been used to identify all potentially affected areas, however actual areas affected could differ, for example if flow paths change due to landform changes.
2. Subject to note 1, the Hydro-electricity inundation hazard areas identify areas that could potentially be affected by inundation in the unlikely event of a dam or canal breach only and do not reflect any natural hazards, for example flooding from rivers.

Background mapping (1:50,000 scale) sourced from the LINZ Data Service and licensed by LINZ for re-use under the Creative Commons Attribution 3.0 New Zealand Licence.



Revision	Amendment	Approved	Revision Date
R1	Potential floodable areas on sheets 23,24,25 refined	M.G.W.	Aug 2015
R2	Hazard areas refined	G.W.	26 / 2 / 16
R3	Hazard areas refined	G.W.	11 / 3 / 16



OPUS
Wellington Office
+64 4 471 7000
PO Box 12-003, Thorndon
Wellington 6144
New Zealand

Drawn: Ken Mercer
Designed: H. Smith (Lead)
W. Vesile (Consultant)

Approved: Grant Webby

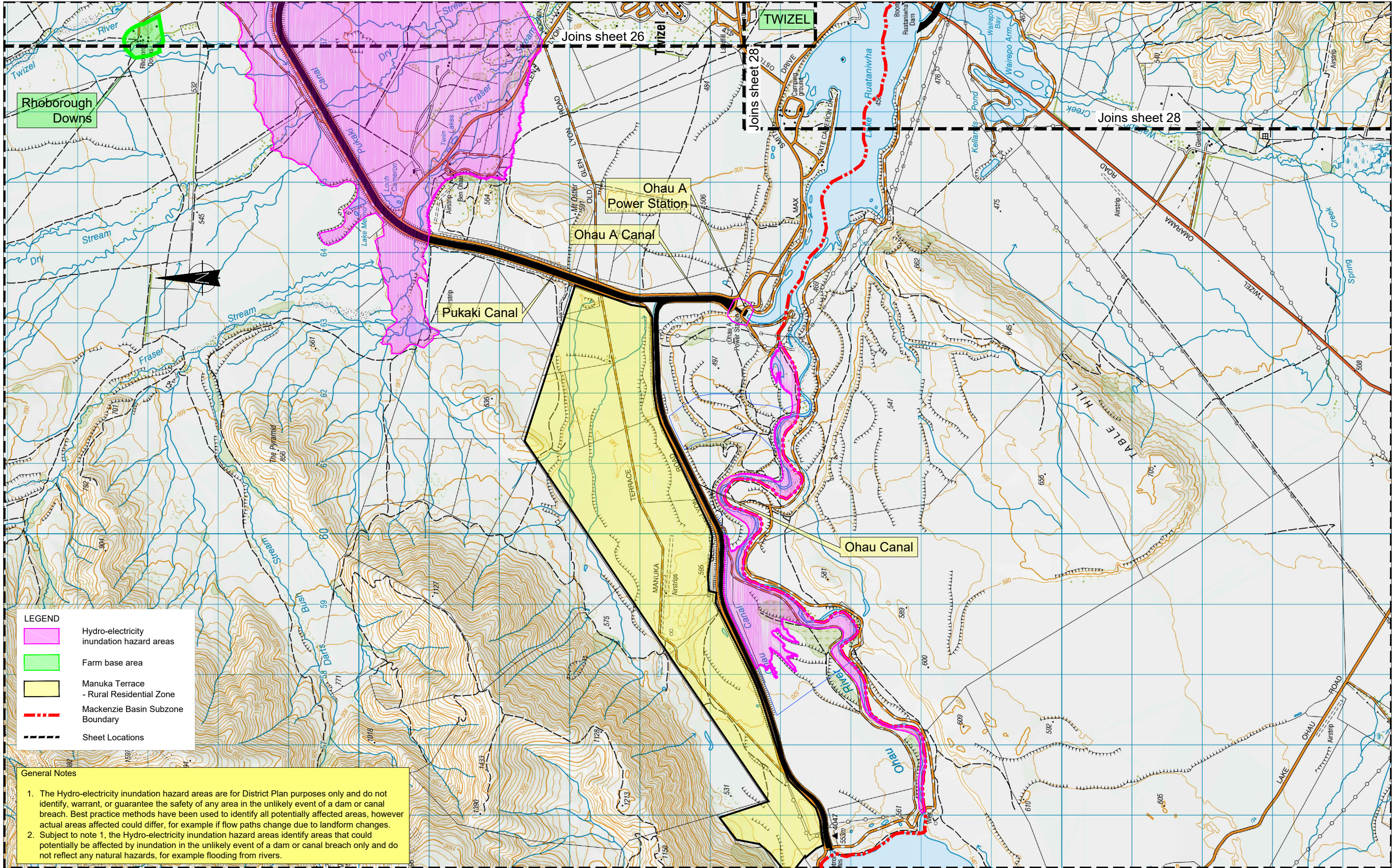
Revision Date: August 2015

Project No: 3-51049.03
Scale: 1:25,000(A1), 1:50,000(A3)

HYDRO-ELECTRICITY INUNDATION HAZARD AREA MAPS FOR MACKENZIE DISTRICT COUNCIL PLAN CHANGE 13

PUKAKI DAM / PUKAKI CANAL INLET STRUCTURE / PUKAKI CANAL FROM INLET TO 5km CHAINAGE

Drawing No: 6/3434/1/6504
Sheet No: 26
Revision: R2



LEGEND

	Hydro-electricity inundation hazard areas
	Farm base area
	Manuka Terrace - Rural Residential Zone
	Mackenzie Basin Subzone Boundary
	Sheet Locations

General Notes

1. The Hydro-electricity inundation hazard areas are for District Plan purposes only and do not identify, warrant, or guarantee the safety of any area in the unlikely event of a dam or canal breach. Best practice methods have been used to identify all potentially affected areas, however actual areas affected could differ, for example if flow paths change due to landform changes.
2. Subject to note 1, the Hydro-electricity inundation hazard areas identify areas that could potentially be affected by inundation in the unlikely event of a dam or canal breach only and do not reflect any natural hazards, for example flooding from rivers.

Background mapping (1:50,000 scale) sourced from the LINZ Data Service and licensed by LINZ for re-use under the Creative Commons Attribution 3.0 New Zealand Licence.

1:25,000(A1)
1:50,000(A3)

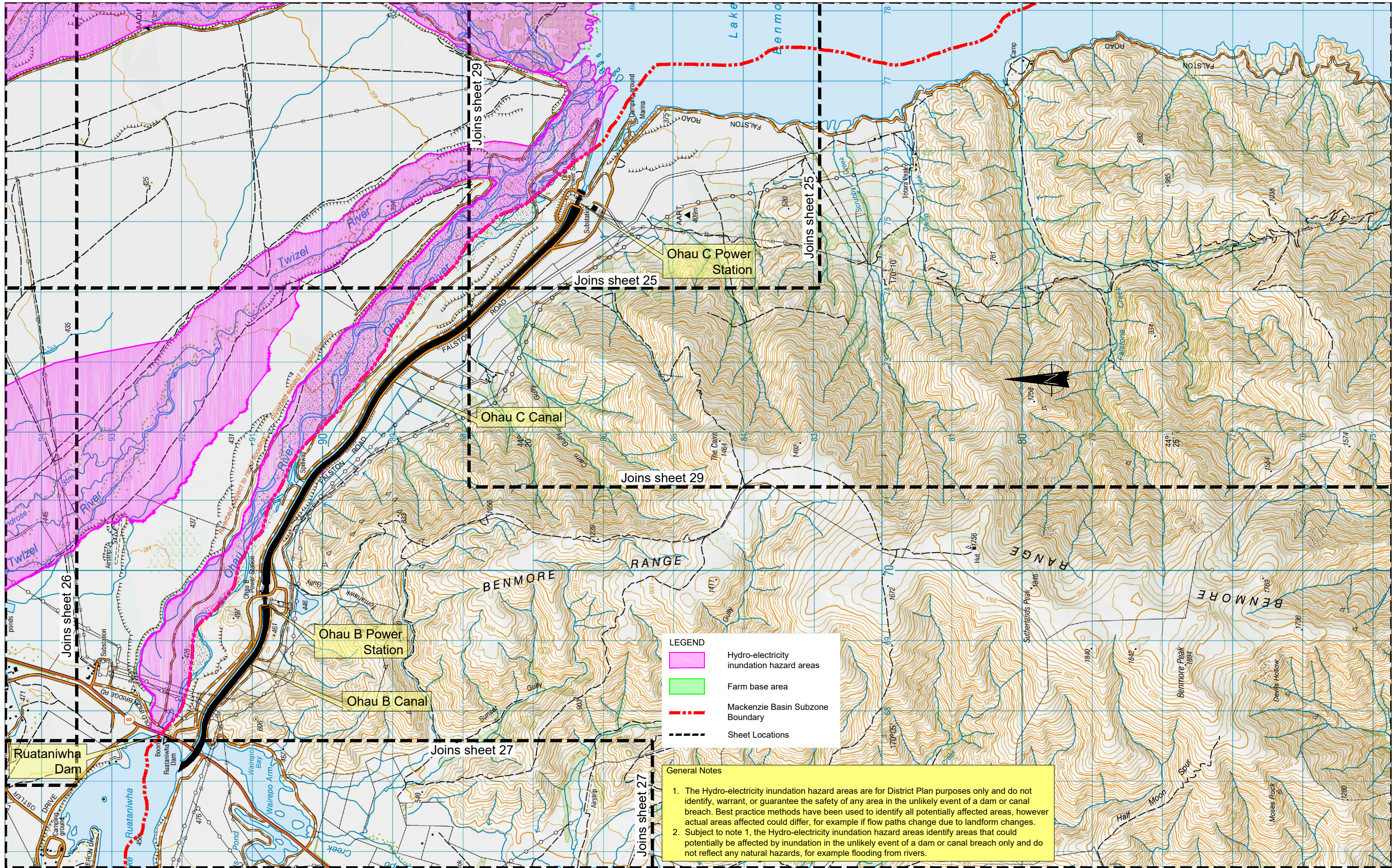
Revision	Amendment	Approved	Revision Date
R1	Changes to legend and general notes	M.G.W.	Aug 2015
R2	Hazard areas refined	G.W.	26 / 2 / 16
R3	Hazard areas refined	G.W.	11 / 3 / 16



OPUS
Wellington Office
+64 4 471 7000
PO Box 12-003, Thorndon
Wellington 6144
New Zealand

Drawn Ken Mercer	Designed H Smith (Draw) W Vesale (Design)	Approved Grant Webby	Revision Date August 2015
Project No. 3-51049.03	Scale 1:25,000(A1), 1:50,000(A3)	Drawing No. 6/3434/1/6504	

Project HYDRO-ELECTRICITY INUNDATION HAZARD AREA MAPS FOR MACKENZIE DISTRICT COUNCIL PLAN CHANGE 13	
Sheet PUKAKI CANAL / OHAU CANAL / OHAU A CANAL / OHAU A POWER STATION / OHAU RIVER	
Sheet No. 27	Revision R2



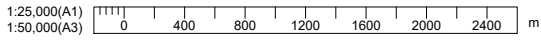
LEGEND

- Hydro-electricity inundation hazard areas
- Farm base area
- Mackenzie Basin Subzone Boundary
- Sheet Locations

General Notes

1. The Hydro-electricity inundation hazard areas are for District Plan purposes only and do not identify, warrant, or guarantee the safety of any area in the unlikely event of a dam or canal breach. Best practice methods have been used to identify all potentially affected areas, however actual areas affected could differ, for example if flow paths change due to landform changes.
2. Subject to note 1, the Hydro-electricity inundation hazard areas identify areas that could potentially be affected by inundation in the unlikely event of a dam or canal breach only and do not reflect any natural hazards, for example flooding from rivers.

Background mapping (1:50,000 scale) sourced from the LINZ Data Service and licensed by LINZ for re-use under the Creative Commons Attribution 3.0 New Zealand Licence.



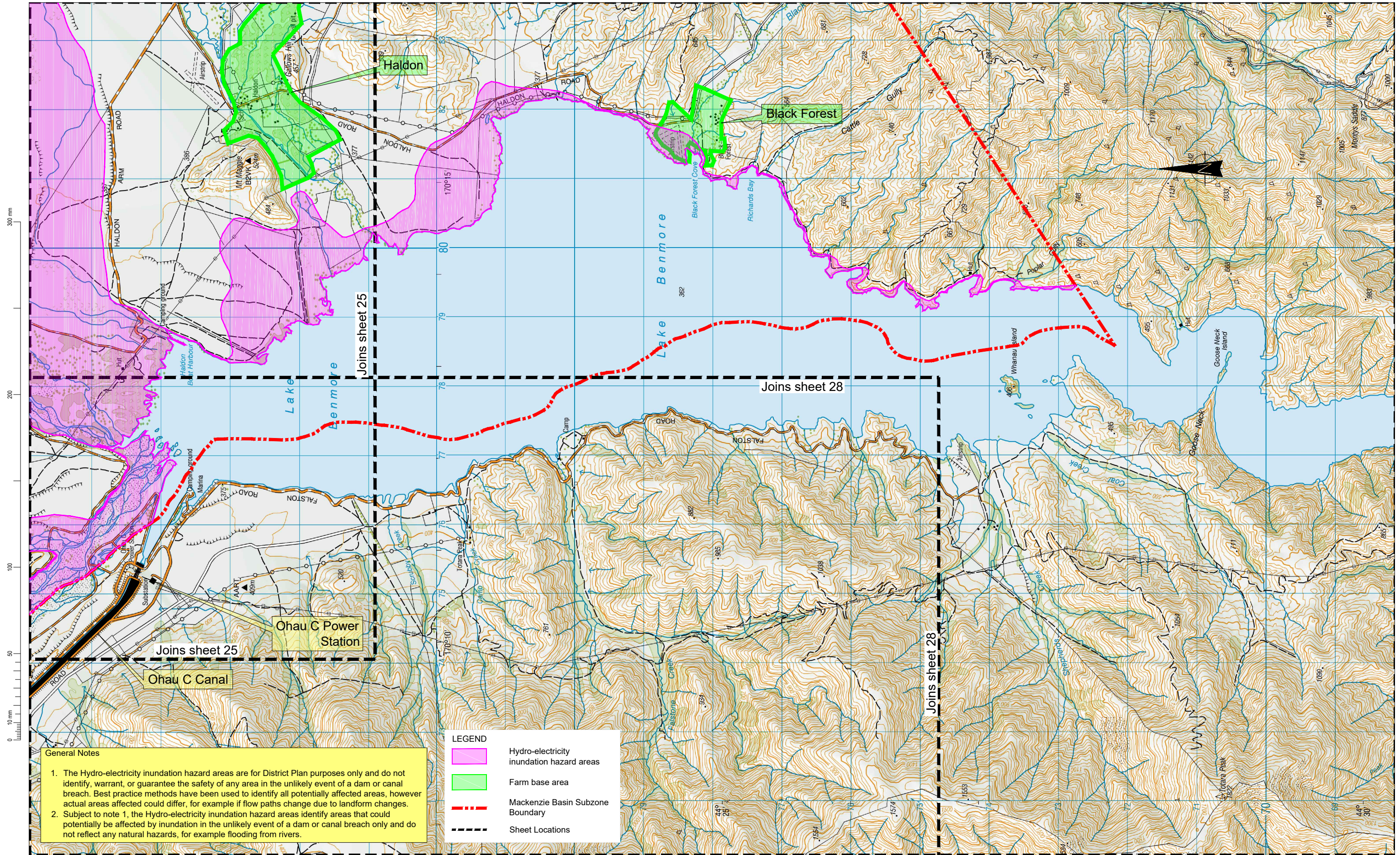
Revision	Amendment	Approved	Revision Date
R1	Changes to legend and general notes	M.G.W.	Aug 2015



OPUS
Wellington Office
+64 4 471 7000
PO Box 12-003, Thorndon
Wellington 6144
New Zealand

Drawn	Designed	Approved	Revision Date
Ken Mercer	H Smith (Civil)	Grant Webby	August 2015
	W Vesale (Civil)		

Project		Sheet	
HYDRO-ELECTRICITY INUNDATION HAZARD AREA MAPS FOR MACKENZIE DISTRICT COUNCIL PLAN CHANGE 13		RUATANIWHA DAM / OHAU B CANAL / OHAU B POWER STATION / OHAU C CANAL / OHAU C POWER STATION	
Project No.	Scale	Drawing No.	Sheet No.
3-51049.03	1:25,000(A1), 1:50,000(A3)	6/3434/1/6504	28
			Revision
			R1



300 mm
200
100
50
10 mm
0

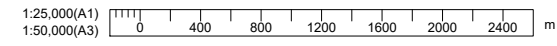
General Notes

1. The Hydro-electricity inundation hazard areas are for District Plan purposes only and do not identify, warrant, or guarantee the safety of any area in the unlikely event of a dam or canal breach. Best practice methods have been used to identify all potentially affected areas, however actual areas affected could differ, for example if flow paths change due to landform changes.
2. Subject to note 1, the Hydro-electricity inundation hazard areas identify areas that could potentially be affected by inundation in the unlikely event of a dam or canal breach only and do not reflect any natural hazards, for example flooding from rivers.

LEGEND

- Hydro-electricity inundation hazard areas
- Farm base area
- Mackenzie Basin Subzone Boundary
- Sheet Locations

Background mapping (1:50,000 scale) sourced from the LINZ Data Service and licensed by LINZ for re-use under the Creative Commons Attribution 3.0 New Zealand Licence.



Revision	Amendment	Approved	Revision Date
R1	Changes to legend and general notes	M.G.W.	Aug 2015



OPUS
Wellington Office
+64 4 471 7000
PO Box 12-003, Thorndon
Wellington 6144
New Zealand

Drawn	Designed	Approved	Revision Date
Ken Mercer	H Smith (Draw) W Vesale (Design)	Grant Webby	August 2015

HYDRO-ELECTRICITY INUNDATION HAZARD AREA MAPS FOR MACKENZIE DISTRICT COUNCIL PLAN CHANGE 13

OHAU RIVER / PUKAKI RIVER / LAKE BENMORE

Project No.	Scale	Drawing No.	Sheet No.	Revision
3-51049.03	1:25,000(A1), 1:50,000(A3)	6/3434/1/6504	29	R1